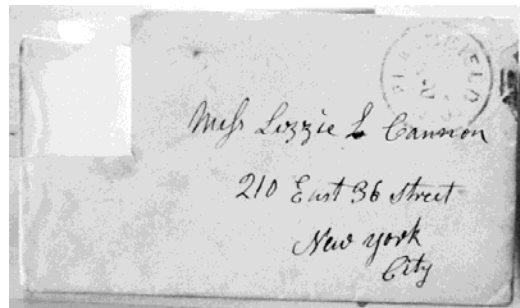


## Individual Narrative of Lizzie<sup>8</sup> Leverich Cannon [223] Daughter of Amy<sup>7</sup> Eliza Leverich [104] and Charles E. Cannon Not Married

Lizzie Leverich Cannon was born in February 1865 at Manhattan, New York Co, New York, the daughter of Charles E. Cannon and Amy Elizabeth Leverich, as per the 1900 U.S. Census of Bridgeport, Fairfield County, Connecticut.<sup>1</sup> Lizzie L. Cannon never married.<sup>2</sup>

Lizzie Cannon, age 5 born New York, is listed in the 1870 U.S. Census of Manhattan, Ward 21, New York County, New York. She is living in the household of her parents Chas E. age 45 and "Mary", age 40 born New York (census reporting error, actually "Amy") Cannon. The household also included her sister Ada, age 9; her aunt Susan Leverich, age 35 (census reporting error records a "Susan Cannon"); and her paternal grandmother Hannah Cannon, age 74.<sup>3</sup>

On 23 June 1873, Nancy Leverich writes from Plainfield, Union County, New Jersey to her granddaughter Ms. Lizzie L. Cannon, 210 East 36th Street, Manhattan, New York County, New York. The letter included an unidentified tin type photo of a young girl who may have been Lizzie, who would have been age 8 at the time. The letter mentions an "Aunt Phoebe" whose specific relationship is not identified.<sup>4</sup>



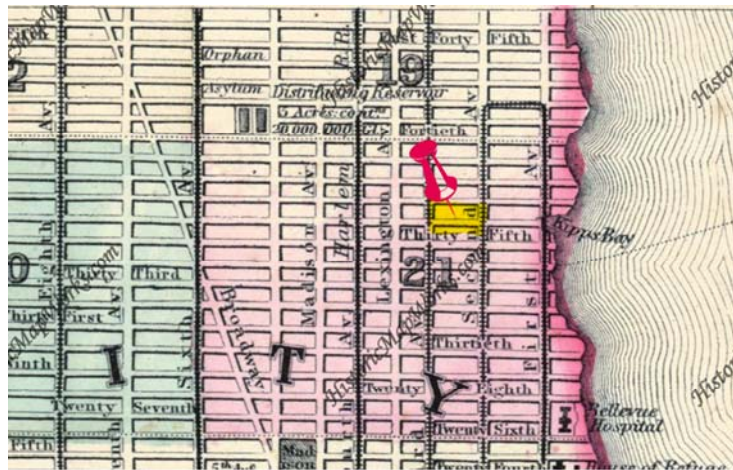
1873  
Plainfield June 23

My Dear Granddaughter

I received your very welcome little letter. I was sorry I left without saying good bye but I did not think of it when you went to school that I should not see you before I left and have to leave before you came home. I think Miss Rogers must have forgot her self to keep you in school so late you say your

Mama and thinks you and her will have to out here as you have had no rain yet we are having a little rain to night but I hope this is only the begining Aunt Phoebe wishes me to say she will be very glad to see you but have to make her a visit. The currants are ripening very fast and they have plenty of gooseberries though they are not ripe. I received a letter from Ada to night which I will answer soon give my love to all but the most for your self from your Grandma N. Leverich

Lizzie L. Cannon, age 15, is listed in the 1880 U.S. Census of Manhattan, New York County, New York at 210 East 36th Street. Lizzie is living in the household of her parents Chas E. Cannon, age 58, and Amy Cannon, age 48. The household also included her sister Ada Cannon, age 19; and her aunt Susan Leverich, age 43.<sup>5</sup>



210 East 36th Street, between 2nd and 3rd Avenues, Manhattan, NY Co, NY  
1864 Mitchell's New General Atlas (Historic Map Works)

The 1940 U.S. Census records that Lizzie L. Cannon had completed the fourth year of college. The name of the college has not been identified, but Lizzie likely attended between 1882 and 1887, when she was about 17 to 22 years of age.<sup>6</sup>

On 7 August 1882 Ada C. Cannon, 282 State Street (probably Bridgeport, Connecticut) wrote a letter to her sister Lizzie L. Cannon. The surviving letter does not identify where Lizzie was living.<sup>7</sup>

About 1884-1885 Lizzie Cannon, her mother Amy Eliza Cannon, and her Aunt Susan Leverich removed from New York City to Bridgeport, Fairfield County, Connecticut. They apparently relocated to be near Lizzie's older sister Ada C. Lyon, whose husband Henry W. Lyon is listed in the 1882 Bridgeport City Directory living at 282 State Street. Henry W. Lyon and Amy E. Cannon are both listed in the 1886 Bridgeport City Directory living at 273 Clinton Avenue.<sup>8,9</sup>



The small girl is Ada Willis Lyon  
With hat is Lizzie Cannon, in  
plaid dress is Ada Cannon Lyon  
Submitted by spshaw76,  
SPS\_PEDIGREE at Ancestry.com

Ada Willis Lyon, daughter of Ada and Henry Lyon, was born 13 April 1887, at Bridgeport, Connecticut

On 19 July 1887 Susan Leverich wrote from Matlock Bank, England to her niece Lizzie. The letter does not identify where Lizzie was living.<sup>10</sup>

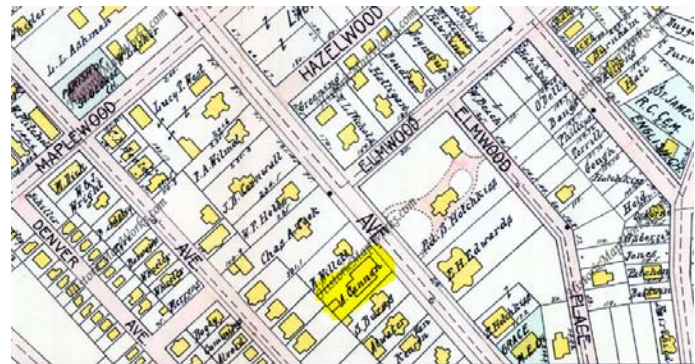
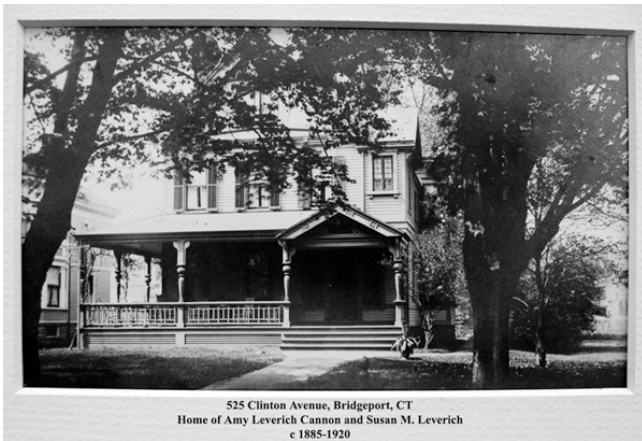
On 12 August perhaps 1887 Susan Leverich writes from Waverly, Hydropathic, Melrose, Scotland to her niece Lizzie. The letter does not indicate where Lizzie was living.<sup>11</sup>

On 6 September 1887 Susan M. Leverich arrived at New York via the Ship Servia from Liverpool, England.<sup>12</sup>

On 15 July perhaps 1889 Susan Leverich writes from London, England to her niece Lizzie. The letter does not indicate where Lizzie was living.<sup>13</sup>

On 5 August 1889 Susan Leverich writes to her niece Lizzie L. Cannon at Catskill, Greene Co, New York. Although the letter is postmarked Bridgeport, Connecticut, the letter appears to have been written from England or Scotland. The stationary Susan used is labeled Lyndhurst, 22, Pembroke Road, Clifton.<sup>14</sup>

Lizzie L. Cannon, age 35, is listed in the 1900 U.S. Census of Bridgeport, Ward 5, Fairfield County, Connecticut at 525 Clinton Avenue. Her mother Amy E. Cannon is the head of household. The household also includes her sister Ada C. Lyon, her husband Henry W. Lyon, and their daughter Ada W. Lyon; and her aunt Susan M. Leverich. No occupation is given for Lizzie.<sup>15</sup>



**525 Clinton Avenue, Bridgeport, CT**  
1910 Atlas William H. Kershaw Plate 19 (Historic Map Works)

On 23 February 1902 Susan Leverich, on a Mediterranean cruise aboard the S. S. Celtic, writes to her niece Lizzie L. Cannon. Susan mentions Gibraltar, Algiers, and Malta.<sup>16</sup>

Lizzie L. Cannon, age 45, is listed in the 1910 U.S. Census of Bridgeport, Fairfield County, Connecticut at 525 Clinton Avenue. Her brother-in-law Henry W. Lyon is the head of household. The household also includes her sister Ada C. Lyon, her niece Ada W. Lyon; her mother Amy E. Cannon; and her aunt Susan M. Leverich. No occupation is given for Lizzie.<sup>17</sup>

Amy E. Cannon died at Bridgeport on 27 September 1911. Letters of administration on Amy's estate were granted 11 October 1911 to her daughters Lizzie L. Cannon and Ada C. Lyon.<sup>18</sup>

Lizzie L. Cannon, age 54, is listed in the 1920 U.S. Census of Bridgeport, Fairfield County, Connecticut at 525 Clinton Avenue. Her brother-in-law Henry W. Lyon is the head of household. The household also includes her sister Ada C. Lyon; and her aunt Susan M. Leverich. No occupation is given for Lizzie.<sup>19</sup>

Lizzie L. Cannon, age 65, is listed in the 1930 U.S. Census of Bridgeport, Fairfield County, Connecticut at 525 Clinton Avenue. Her sister Ada C. Lyon is the head of household. The household also includes a guest May E. Smith, a private nurse. No occupation is given for Lizzie.<sup>20</sup>

Lizzie L. Cannon is listed in the 1938 Bridgeport City Directory living at 525 Clinton Avenue.<sup>21</sup>

Lizzie L. Cannon, age 75, is recorded in the 1940 U.S. Census living at the Stratfield Hotel in Bridgeport, Fairfield County, Connecticut.<sup>22</sup>



Lizzie L. Cannon is listed in the 1939, 1940, and 1941 Bridgeport City Directories living at 605 Brooklawn Avenue, Fairfield Township, Bridgeport Post Office.<sup>23,24,25</sup>

Lizzie Leverich Cannon died on 18 Nov 1941 at Bridgeport, Fairfield, Connecticut, at age 76, and was buried at Mountain Grove Cemetery and Mausoleum in Bridgeport. No probate record is found for Lizzie in the Fairfield County, Connecticut probate index, although a probate record is found in 1911 for Lizzie's mother Amy E. Cannon.<sup>26,27,28,29</sup>



On 19 November 1941 an obituary published in the Bridgeport Post for Lizzie L. Cannon identified the following survivors: niece Mrs. Harold C. Rood of Bridgeport; grandnieces: Mrs. Richard Bristol of Bridgeport; Mrs. Townsend Wheeler of Bridgeport; and Mrs. Robert Safford of Rochester (state not identified).<sup>30</sup>

The 1942-1943 Bridgeport, Connecticut City Directory records that Lizzie L. Cannon died on 18 November 1941 at the age of 76.<sup>31</sup>

Printed on: 21 Aug 2020  
Prepared by:  
Tom Leverich  
28 Saratoga Drive  
West Windsor, New Jersey 08550  
tomaug12@aol.com  
609-275-1239  
www.leverichgenealogy.org

## Bibliography

1870 U.S. Census New York, New York Co. NARA, M593, Roll 1009. Ancestry.com, 360 West 4800 North, Provo, Utah 84604.

1880 U.S. Census New York, New York Co. NARA, T9, Roll 890. Ancestry.com, 360 West 4800 North, Provo, Utah 84604.

1900 U.S. Census Connecticut, Bridgeport Fairfield Co. NARA, T623, Roll 131. Ancestry.com, 360 West 4800 North, Provo, Utah 84604.

1910 U.S. Census Connecticut, Bridgeport Fairfield Co. NARA, T624, Roll 128. Ancestry.com, 360 West 4800 North, Provo, Utah 84604.

1920 U.S. Census Connecticut, Bridgeport Fairfield Co. NARA, T625, Roll 175. Ancestry.com, 360 West 4800 North, Provo, Utah 84604.

1930 U.S. Census Connecticut, Bridgeport Fairfield Co. NARA, T626, ED025. Ancestry.com, 360 West 4800 North, Provo, Utah 84604.

1940 U.S. Census Connecticut, Bridgeport Fairfield Co. NARA, T627, Roll 532. Ancestry.com, 360 West 4800 North, Provo, Utah 84604.

*Bridgeport CT City Directory 1882.* Bridgeport, Connecticut: Price, Lee & Co, 1882.

*Bridgeport CT City Directory 1886.* Bridgeport, Connecticut: Price, Lee & Co, 1886.

*Bridgeport CT City Directory 1938.* Bridgeport, Connecticut: Price and Lee Co, 1938.

*Bridgeport CT City Directory 1939.* Bridgeport, Connecticut: Price and Lee Co, 1939.

*Bridgeport CT City Directory 1940.* Bridgeport, Connecticut: Price and Lee Co, 1940.

*Bridgeport CT City Directory 1941.* Bridgeport, Connecticut: Price and Lee Co, 1941.

*Bridgeport CT City Directory 1942-1943.* Bridgeport, Connecticut: Price and Lee Co, 1942-1943.

*Bridgeport Post,* Bridgeport, Fairfield Co, Connecticut, 1906-1992, Bridgeport Public Library.

Cannon, Amy 1911 Probate. Bridgeport, Fairfield Co, CT Probate Court, 202 State St, Bridgeport, Fairfield, Connecticut 06604.

*Connecticut Death Records, 1897-1968,* Connecticut State Library, Index, online <https://www.ctatatlbrary.org/death-records>.

Find A Grave. Online [www.findagrave.com](http://www.findagrave.com).

Leverich, Susan M. Papers; Manuscript Collection Family Artifacts. Letters, Journals, Documents, Photographs., Stephen P. Shaw, Custodian, Chester, Connecticut. This collection was donated to the New England Historic Genealogical Society in two installments: 20 October 2017 and 14 April 2018. See announcement "American Ancestors," Volume 19, No. 2, Summer 2018, pages 56-57.

*Passenger Lists of Vessels Arriving at New York.* Micro-publication M237, 511. Washington, D.C.: National Archives.

## Endnotes

- 
- <sup>1</sup>1900 U.S. Census Connecticut, Bridgeport Fairfield Co. Ancestry.com, Provo, Utah. NARA, T623, Roll 131, Bridgeport, ED 023, page 1.
- <sup>2</sup>1940 U.S. Census Connecticut, Bridgeport Fairfield Co. Ancestry.com, Provo, Utah. NARA, T627, Roll 532, Bridgeport, ED 9-86, pages 82A&B.
- <sup>3</sup>1870 U.S. Census New York, New York Co. Ancestry.com, Provo, Utah. NARA, M593, Roll 1009, Manhattan, Ward 21, District 11, page 289A.
- <sup>4</sup>Leverich, Susan M. Papers; Manuscript Collection Family Artifacts. Journals, Documents, Photographs, Letters. Stephen P. Shaw, Custodian, Chester, Connecticut. This collection was donated to the New England Historic Genealogical Society in two installments: 20 October 2017 and 14 April 2018. See announcement "American Ancestors," Volume 19, No. 2, Summer 2018, pages 56-57.
- <sup>5</sup>1880 U.S. Census New York, New York Co. Ancestry.com, Provo, Utah. NARA, T9, Roll 890, Manhattan, ED 489, page 217A.
- <sup>6</sup>1940 U.S. Census Connecticut, Bridgeport Fairfield Co, Ancestry.com, Bridgeport, ED 9-86, page 82B.
- <sup>7</sup>Leverich, Susan M. Papers.
- <sup>8</sup>*Bridgeport CT City Directory 1882* (Bridgeport, Connecticut: Price, Lee & Co, 1882). Hereinafter cited as *Bridgeport CT City Directory 1882*.
- <sup>9</sup>*Bridgeport CT City Directory 1886* (Bridgeport, Connecticut: Price, Lee & Co, 1886). Hereinafter cited as *Bridgeport CT City Directory 1886*.
- <sup>10</sup>Leverich, Susan M. Papers.
- <sup>11</sup>Ibid.
- <sup>12</sup>Susan M. Leverich entry; *Servia* Passenger Manifest, 6 September 1887, List Number 1130; in *Passenger Lists of Vessels Arriving at New York*; micropublication M237 (Washington, D.C.: National Archives), 511.
- <sup>13</sup>Leverich, Susan M. Papers.
- <sup>14</sup>Ibid.
- <sup>15</sup>1900 U.S. Census Connecticut, Bridgeport Fairfield Co, Ancestry.com, Bridgeport, Ward 5, ED 023, page 1.
- <sup>16</sup>Leverich, Susan M. Papers.
- <sup>17</sup>1910 U.S. Census Connecticut, Bridgeport Fairfield Co. Ancestry.com, Provo, Utah. NARA, T624, Roll 128, Bridgeport, ED 021, page 2B.
- <sup>18</sup>Amy Cannon Probate (1911), ; Bridgeport, Fairfield Co, CT Probate Court, 202 State St, Bridgeport, Fairfield, Connecticut 06604. Hereinafter cited as 1911 Probate Amy Cannon.
- <sup>19</sup>1920 U.S. Census Connecticut, Bridgeport Fairfield Co. Ancestry.com, Provo, Utah. NARA, T625, Roll 175, Bridgeport, ED 031, page 8B.
- <sup>20</sup>1930 U.S. Census Connecticut, Bridgeport Fairfield Co. Ancestry.com, Provo, Utah. NARA, T626, ED025, Bridgeport, ED 025, page 13A.
- <sup>21</sup>*Bridgeport CT City Directory 1938* (Bridgeport, Connecticut: Price and Lee Co, 1938). Hereinafter cited as *Bridgeport CT City Directory 1938*.
- <sup>22</sup>1940 U.S. Census Connecticut, Bridgeport Fairfield Co, Ancestry.com, Bridgeport, ED 9-86, page 82A&B.
- <sup>23</sup>*Bridgeport CT City Directory 1939* (Bridgeport, Connecticut: Price and Lee Co, 1939). Hereinafter cited as *Bridgeport CT City Directory 1939*.
- <sup>24</sup>*Bridgeport CT City Directory 1940* (Bridgeport, Connecticut: Price and Lee Co, 1940). Hereinafter cited as *Bridgeport CT City Directory 1940*.
- <sup>25</sup>*Bridgeport CT City Directory 1941* (Bridgeport, Connecticut: Price and Lee Co, 1941). Hereinafter cited as *Bridgeport CT City Directory 1941*.
- <sup>26</sup>*Connecticut Death Records, 1897-1968*, Connecticut State Library Index, online <https://www.ctatatelibrary.org/death-records>).
- <sup>27</sup>*Bridgeport Post*, Bridgeport, Fairfield Co, Connecticut, 1906-1992. Hereinafter cited as *Bridgeport Post*, 19 November 1941, page 21.
- <sup>28</sup>Find A Grave, online <[www.findagrave.com](http://www.findagrave.com)>, Memorial Number 140286227. Hereinafter cited as Find A Grave.
- <sup>29</sup>1911 Probate Amy Cannon, Bridgeport, Fairfield Co, CT Probate Court.
- <sup>30</sup>*Bridgeport Post*, 19 November 1941, page 21.
- <sup>31</sup>*Bridgeport CT City Directory 1942-1943* (Bridgeport, Connecticut: Price and Lee Co, 1942-1943). Hereinafter cited as *Bridgeport CT City Directory 1942-1943*.