

**Individual Narrative of Charles⁸ Duncan Leverich [304]
Son of Charles⁷ Palmer Leverich [142] and Matilda Duncan Gustine
Husband of Julia Lawrence Riker
Husband of Fannie Floyd-Jones**

Charles Duncan Leverich was born on 29 October 1840 at Newtown, Queens County, New York.^{1,2}

Charles D. Leverich, age 19, was recorded in the 1860 U.S. Census of Newtown, Queens County, New York. His household included his parents Charles P. and Matilda Leverich, ages 49 and 43 respectively; also siblings Stephen, age not recorded; James H., age 13; and Matilda, age 9.³

Charles D. Leverich may have served in the Civil War enlisting 23 September 1862 as a private in the 15th New York Engineers Regiment mustering out 13 June 1865 at Ft. Barry, Virginia. Ancestry.com indexes identify him as Charles O. Leverich, which may be an indexer's error, since there is no Charles "O" Leverich known to exist at that time.⁴



Charles Duncan Leverich married Julia Lawrence Riker on 8 October 1863 at Newtown, Queens County, New York.^{5,6}

Julia L. Riker was born 24 July 1844 at Newtown, Queens County, New York. She was the daughter and youngest child of John Lawrence Riker Sr and Lavinia Smith. Julia died 28 February 1866 at Newtown at the young age of 22. She was buried at the Riker-Lent Burial Ground in Queens County.^{7,8}

Charles D. Leverich and Julia L. Riker had two children, both of whom died as young toddlers.

- i. Sarah Leverich was born 1 August 1864 and died 5 August 1867 at age 3 at Newtown, Queens County, New York. She was buried at the Riker-Lent Burial Ground in Queens County.⁹
- ii. Charles Palmer Leverich Jr was born 18 February 1866 and died 6 August 1867 age 18 months at Newtown, Queens County, New York. He was buried at the Riker-Lent Burial Ground in Queens County.^{10,11}

Charles D. Leverich, age 30, was recorded in the 1870 U.S. Census of Newtown, Queens County, New York. His household included his parents Charles P. and Matilda D. Leverich, ages 60 and 50 respectively; also brother Duncan, age 24; Duncan's wife Mary, age 23; Charles' second wife Fannie, age 23; brother James, no age; and sister Matilda R., age 18.¹²

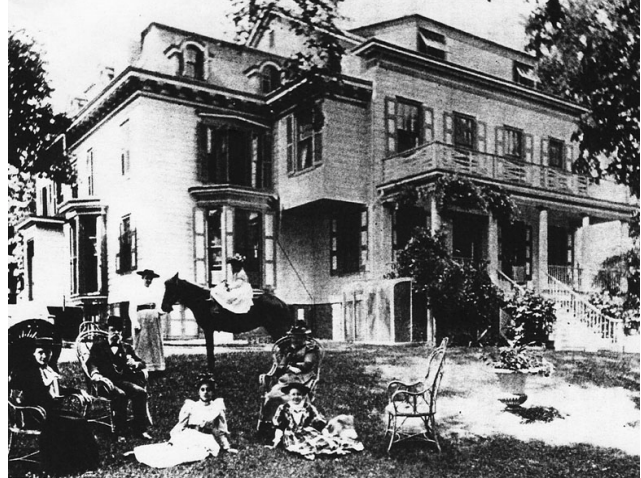
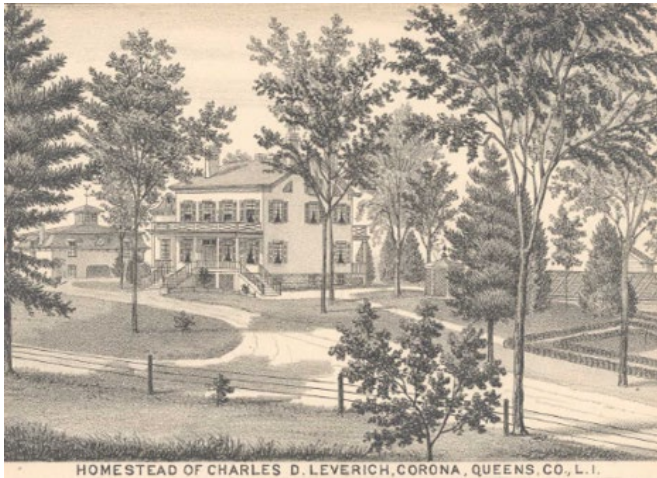
Charles Duncan Leverich married Fannie Floyd-Jones on 30 June 1870 at Massapequa, Nassau County, New York.^{13,14}

Fannie Floyd-Jones Leverich was born 3 April 1849 in Manhattan, New York County, New York. Her parents were William Floyd-Jones and Caroline Amelia Blackwell. Fannie spent a lot of her time working on the activities of the Union Evangelical Church in Corona, Queens County, New York, a church founded by her father-in-law Charles P. Leverich. Charles D. Leverich was a Church Elder and Superintendent of the Sunday School.^{15,16,17,18}



Charles D. Leverich, age 40, was recorded in the 1880 U.S. Census of Newtown, Queens County, New York. The household included his wife Fanny F.J. Leverich, age 30; and his daughter Carrie, age 4.¹⁹

Charles D. Leverich moved to a new house for his family, which had been built by his father, which he called "Fairlawn". See pictures below. It was located just west of what is now Junction Boulevard, north of the lands held by his Uncle Henry Leverich, south of Jackson Avenue (what is now Northern Boulevard), in Corona, Queens County, New York.²⁰



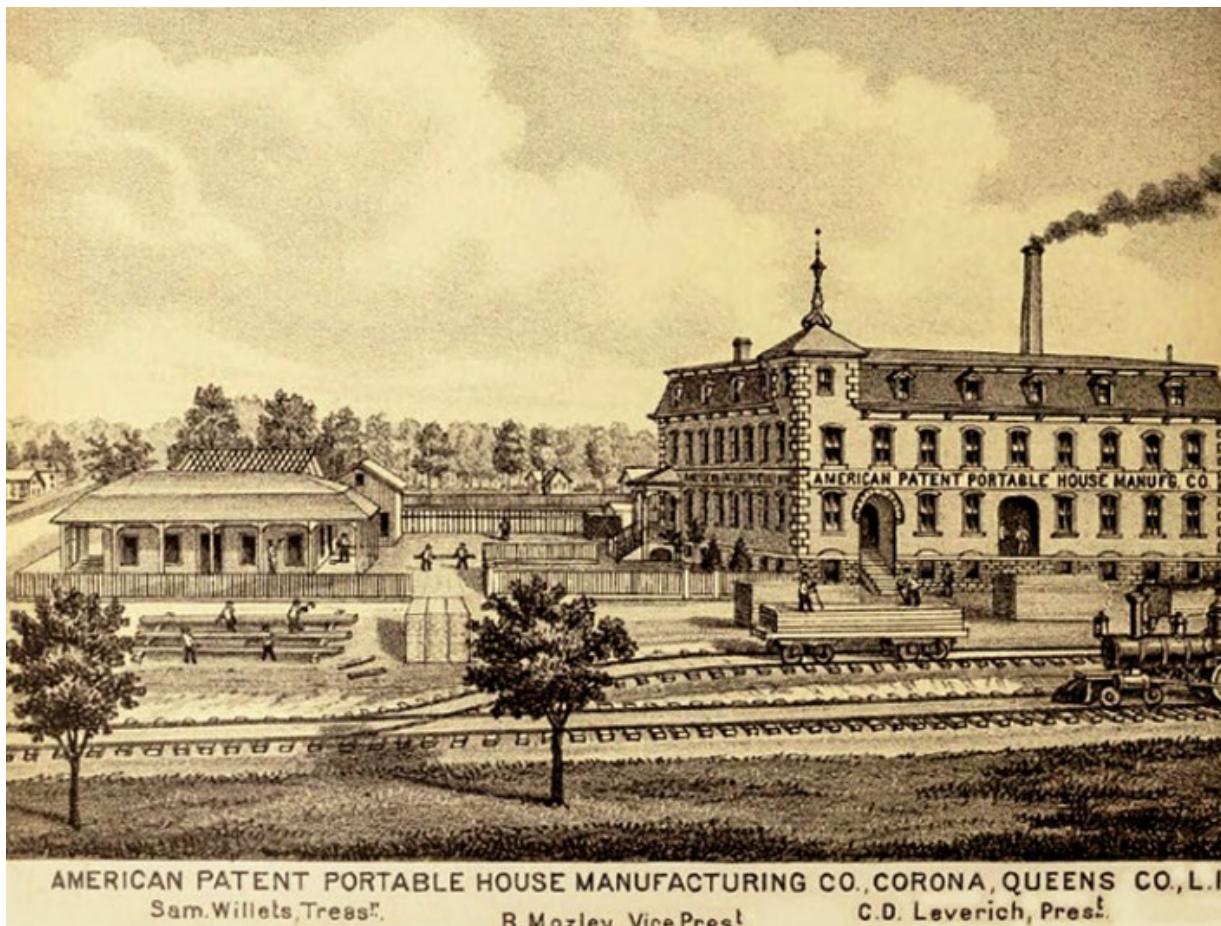
On Christmas 1881 Charles D. Leverich played Santa Claus in his own peculiar and happy way. The Sunday School at the Union Evangelical Church is one of the largest in town. Charles sent to each family represented in the Sunday School a large fat turkey and scores were thus enabled to enjoy a Christmas feast that they otherwise might not.²¹

Charles D. Leverich was a successful broker and banker on wall street in Manhattan, New York County, New York. He also had several other community interests including the Queens County Agricultural Society and the Union Evangelical Church where he was Superintendent of the Sunday School for over 35 years. He was a honorary trustee of the Bank of New York and a trustee of the Atlantic Mutual Insurance Company and the American Bible Society. He was a Director of the American Safe Deposit Company of New York, and a member of the Newtown Exempt Firemens Association of Elmhurst.^{22,23,24}

W. W. Munsell (History of Queens County, 1882) reported that "The latest industry established here is the manufacture of portable buildings, and, although the factory is scarcely in operation at the date of this writing, the enterprise bids fair to rapidly become a leading feature of the village. In 1880 Earl Lee secured letters patent on a system of making light, cheap, portable houses, which might supply the demand heretofore imperfectly met by the various kinds of tents, and began their construction on a small scale at his shop at Corona. Bringing to the business not only the resources of an inventor but his extensive experience as an architect and builder, Mr. Lee very soon made the experiment a success, and the portable houses at once found a place in the market both at home and abroad, and before the close of 1881 larger facilities were demanded for their manufacture.

About this time Charles D. Leverich became interested in having Mr. Lee locate a factory at Corona. Upon investigating the merits of his invention Mr. Leverich saw that to operate successfully would require more than individual effort, and accordingly a stock company was incorporated under the name of the American Patent Portable House Manufacturing Company, with the following board of officers: President, Charles D. Leverich; vice president, B. Mozley; secretary and treasurer, Samuel Willets.

Mr. Lee, the inventor, became the manager at the factory, which is located at Corona.²⁵



Charles D. Leverich, age 57, was recorded in the 1900 U.S. Census of Ward 2, Queens County, New York. The street address was 14 Junction Avenue. The household included his wife Fannie, age 57. Also his daughters Carrie D., age 24; Mathilda G., age 14; and Gertrude R., age 12.²⁶

On 31 October 1902 by invitation Charles D. Leverich gave an address on the occasion of the 250th Anniversary of the Newtown Presbyterian Church in Queens County, New York. The address included observations on the role of the Leverich family in the founding and growth of the Church. The complete text of the address was published in the Newtown Register on 6 November 1902.²⁷

Leverich Memorial Church is one of the oldest parishes in Corona. One of the founders in 1908 was Charles D. Leverich, and named after his father Charles P. Leverich. Birthed from the idea of Rev William J. Peck, the pastor of the Union Evangelical Church, to establish a sister fellowship on the north side of Corona. Leverich Memorial Church is integrated, both in race and religious denomination. The Church is currently a very active religious institution.^{28,29}



On 25 November 1909 Charles D. Leverich gave Thanksgiving turkeys to each of the 36 teachers of Public School 15, which was located across from the Leverich estate. From the classrooms, the school children could look over the vast territory to the west, which is a panoramic view of the home, farm, pastures, and greenhouses.³⁰

Charles D. Leverich, age 69, was recorded in the 1910 U.S. Census of Ward 2, Queens County, New York. His household included his wife Fanny, age 61; his daughter Mathilde G., age 29; and daughter Gertrude R., age 25.³¹

On 28 October 1910 there was a chimney fire at "Fairview", the residence of Charles D. Leverich, west of Junction near Jackson Avenue (now Northern Blvd), Corona, which necessitated the calling out of Engine Company No. 8 on what was termed a "still alarm", no box being pulled. The volunteers were summoned by phone through Chief Weber. It was a lively chimney fire, and it was fortunate that it occurred shortly before 7 o'clock instead of a later hour. The hose wagon of No. 8 brought a score of firemen to the scene, who used chemicals. About the worst damage was caused when several scuttles of coal were dispatched down the chimney from the roof to clear the soot. It caused a shower of soot in the cozy sitting room.³²

On 27 June 1913 officers and teachers of the Union Evangelical Church and Sunday school, together with a number of friends, went in a delegation to Fairview the residence of Charles D. Leverich, where they presented Charles a "surprise" in honor of his 35th anniversary as Superintendent of the Sunday school. A beautiful silver loving cup was the gift given to Charles.³³

On 29 October 1915 Charles D. Leverich celebrated his 75th birthday. A 4 November 1915 article in the Newtown Register recounted the highlights of his life, and his good health and disposition resulted in him living another ten years at his Fairlawn Estate in Corona, Queens County, New York.³⁴



Fannie Floyd-Jone Leverich died 27 August 1918 at Fairview, Corona, Queens County, New York. She was buried at the Floyd-Jones Cemetery on the grounds of Grace Episcopal Church in Massapequa, Nassau County, New York.^{35,36,37,38}

Fannie F. J. Leverich made a will which was proven 10 September 1918 at the Queens County, New York Surrogate. The will mentions her husband Charles D. Leverich. Also her three daughters and sons-in-law, i.e. Caroline D. Leverich and A. Schuyler Clark; Mathilda G. Leverich and John Moore Perry; Gertrude R. Leverich and John T. Harrison. Also three grandchildren, i.e.: Frances L. Riker; A. S. Clark Jr.; John T. Harrison Jr. Fannie also left legacies to the Union Evangelical Church and the Childrens Home in Mineola, Nassau County, New York. The balance of the estate, after individual legacies, went to her husband Charles D. Leverich.^{39,40}

Charles D. Leverich, age 80, was recorded in the 1920 U.S. Census of Assembly District 3, Queens County, New York. His household included his daughter Carrie L. Clark, age 44; his son-in-law A. Schuyler Clark, age 46; his granddaughter Frances Riker, age 14; and his grandson A. Schuyler Clark, age 8.⁴¹

In January 1922 Charles withdrew from the membership of Union Evangelica Church and joined the congregation of the Newtown Presbyterian Church. More than 60 years ago he was a member of the Manhattan Presbyterian Church. He left to join his father in founding Union Evangelical Church. Now that Union Evangelical is doing so well, Charles felt that he would spend the remaining days of his life with the mother church where he originally worshiped.^{42,43}

Charles Duncan Leverich died on 18 February 1925 at Corona, Queens County, New York, at age 84.⁴⁴ Charles died at his homestead Fairview, and he was buried at the Floyd-Jones Cemetery on the grounds of Grace Episcopal Church in Massapequa, Nassau County, New York.^{45,46}

Charles D. Leverich, living at Junction Avenue, Corona, Queens County, New York made a will dated 14 January 1919 which was proven 25 February 1925 at the Queens County, New York Surrogate. The will mentions three daughters: Carrie L. Clark, living Greensfarms, Connecticut; Mathilda G. Perry, living Flower Field, Suffolk Co, New York; Gertrude, living Junction Avenue, Corona. The three daughters are named executors of the estate.⁴⁷

Charles D. Leverich and Fannie Floyd-Jones had three children, all of whom survived to adulthood.⁴⁸

- i. Caroline Duncan (Carrie) Leverich was born 11 December 1875 in Queens County, New York. Carrie married first John Lawrence Riker II 12 December 1900 Queens County, New York. Carrie married second A. Schuyler Clark 19 June 1911 in Queens County. Carrie died 28 February 1944 in Manhattan, New York County, New York. She was buried at the Floyd-Jones Cemetery on the grounds of Grace Episcopal Church in Massapequa, Nassau County, New York. Carrie was recorded in the 1880 and 1900 Census Queens County; 1910 Kingston, Ulster County, New York; 1920 Queens County; 1930 Manhattan; 1940 Ulster County.^{49,50,51,52,53,54,55,56,57,58,59,60}
- ii. Mathilda Gustine Leverich was born 10 December 1880 in Manhattan, New York County, New York. Mathilda married John Moore Perry 21 May 1910 at Corona, Queens County, New York. Mathilda died 25 July 1970 in San Diego, California. She was buried in the Floyd-Jones Cemetery on the grounds of Grace Episcopal Church in Massapequa, Nassau County, New York. She was recorded in the U.S. Census 1900, 1910, and 1920 Queens County, New York; 1930 and 1940 Manhattan, New York County, New York.^{61,62,63,64,65,66,67,68,69,70,71}
- iii. Gertrude Riker Leverich was born 28 October 1887 in Corona, Queens County, New York. Gertrude married John Triplett Harrison 17 June 1911 at Corona. Gertrude died 25 June 1974 at Bridgeport, Connecticut. She was buried at the Floyd-Jones Cemetery on the grounds of Grace Episcopal Church in Massapequa, Nassau County, New York. Gertrude was recorded in the U.S. Census 1900, 1910, and 1920 in Queens County; 1930, 1940, and 1950 in Manhattan, New York County, New York.^{72,73,74,75,76,77,78,79,80,81,82,83}

Printed on: 11 Feb 2024

Prepared by:

Tom Leverich

28 Saratoga Drive

West Windsor, New Jersey 08550

tomaug12@aol.com

609-275-1239

www.leverichgenealogy.org

Bibliography

- 1860 U.S. Census New York, Queens Co. NARA, M653, Roll 843. Ancestry.com, 360 West 4800 North, Provo, Utah 84604.
- 1870 U.S. Census New York, Queens Co. NARA, M593, Roll 1081. Ancestry.com, 360 West 4800 North, Provo, Utah 84604.
- 1880 U.S. Census New York, Queens Co. NARA, T9, Roll 919. Ancestry.com, 360 West 4800 North, Provo, Utah 84604.
- 1900 U.S. Census New York, Queens Co. NARA, T623, Roll 1148. Ancestry.com, 360 West 4800 North, Provo, Utah 84604.
- 1910 U.S. Census New York, Queens Co. NARA, T624, Roll 1066. Ancestry.com, 360 West 4800 North, Provo, Utah 84604.
- 1910 U.S. Census New York, Ulster Co. NARA, T624, Roll 1085. Ancestry.com, 360 West 4800 North, Provo, Utah 84604.
- 1920 U.S. Census New York, Queens Co. NARA, T625, Roll 1232. Ancestry.com, 360 West 4800 North, Provo, Utah 84604.
- 1930 U.S. Census New York, New York Co. NARA, T626, ED 31-706. Ancestry.com, 360 West 4800 North, Provo, Utah 84604.
- 1940 U.S. Census New York, New York Co. NARA, T627, ED 1364a. Ancestry.com, 360 West 4800 North, Provo, Utah 84604.
- 1940 U.S. Census New York, Ulster Co. NARA, T-627, ED 56-83. Ancestry.com, 360 West 4800 North, Provo, Utah 84604.
- 1950 U.S. Census New York, New York County. NARA, Record Group 29. Ancestry.com, 360 West 4800 North, Provo, Utah 84604.
- Ancestry, *New York, NY Extracted Marriage Index, 1866-1937*, Index, online <https://ancestry.com>.
- Brooklyn Daily Star*, Brooklyn, New York, 189?-1933, Old Fulton New York Post Cards.
- California Death Index 1940-1997*, FamilySearch, Index, online <https://familysearch.org>.
- Civil War Soldier Records and Profiles, 1861-1865; Historical Data Systems, (Duxbury, Massachusetts), 2009.
- Connecticut Death Index, 1949-2012. Online ancestry.com, Index. Hartford, Connecticut.
- Find A Grave. Online www.findagrave.com.
- Leverich Memorial Church. Online Web Sites.
- Maher, James P. *Index to Marriages and Deaths in the New York Herald, 1864-1870, Volume 3*. Baltimore, Maryland: Genealogical Publishing Co, 2000.
- New York Herald*, New York, New York, 1840-1920, New York State Library.

New York Times, Manhattan, New York Co, New York, 1851-Date, NY Times Article Archive.

New York Wills and Probate Records, 1659-1999. Online Ancestry.com, Index and Records.

New York, New York City Municipal Deaths 1795-1949, Database Family Search. Online <https://familysearch.org/search/collection/2240477>, Municipal Archives City of New York. 1795-1949.

New York, NY Index to Death Certificates 1862-1948. Online www.ancestry.com, Index.

New York, NY Index to Birth Certificates 1866-1909. Online ancestry.com, Index. New York Co, New York.

New York, NY Marriage License Indexes, 1907-2018. Online www.ancestry.com, Index.

New York, State Birth Index, 1881-1942. Online ancestry.com, Index. Albany, New York.

Newtown Register, Newtown, Queens Co, New York, 1873-1935, Old Fulton New York Post Cards.

Passport Applications; Record Group 59; (Washington, DC: National Archives), Roll No. 0590.

The Holland Society of New York. *Dutch Reformed Church Records New York and New Jersey*. Provo, Utah: Ancestry.com, 2014.

Tuggle, Sharon K.. State Line, Indiana. n.pub.: 2023.

W. W. Munsell. *History of Queens County, New York*. New York, New York: W. W. Munawll, 1882.

White, Arthur. "Newtown Presbyterian Church Records." 1922, Transcription. New York Public Library, Stephen A. Schwarzman Building, Irma and Paul Milstein Division of U.S. History, Local History and Genealogy, 5th Avenue and 42nd Street, Manhattan, New York, New York 10018. Originally Published in the *New York Genealogical and Biographical Record*: 55 (1924) 162-167, 281-291, 383-400; 56 (1925) 73-83, 173-187, 353-359. Subsequently published in *Collections NY G&B Society*, Volume 8. Original transcript is part of the NYG&B Manuscript Collections, which are now held by the New York Public Library, Archives Division. The original Church records remain at the Church, 54-05 Seabury Street Queens Blvd and 54th Avenue, Elmhurst, Queens County, New York.

Whitney, Alexandra – Correspondent-2000. New York, New York 10029. Died 1914.

Endnotes

-
- ¹*Newtown Register*, Newtown, Queens Co, New York, 1873-1935. Hereinafter cited as *Newtown Register*, 21 February 1925, page 1.
- ²Find A Grave, online <www.findagrave.com>, Memorial Number 88405983. Hereinafter cited as Find A Grave.
- ³1860 U.S. Census New York, Queens Co. Ancestry.com, Provo, Utah. NARA, M653, Roll 843, Newtown, page 165.
- ⁴Civil War Soldier Records and Profiles, 1861-1865; Historical Data Systems, (Duxbury, Massachusetts), 2009.
- ⁵Arthur White, "Newtown Presbyterian Church Records," 1922, Transcription, New York Public Library, Stephen A. Schwarzman Building, Irma and Paul Milstein Division of U.S. History, Local History and Genealogy, 5th Avenue and 42nd Street, Manhattan, New York, New York 10018, Marriages 1863. Hereinafter cited as "Newtown Presbyterian Records."
- ⁶James P. Maher, *Index to Marriages and Deaths in the New York Herald, 1864-1870, Volume 3* (Baltimore, Maryland: Genealogical Publishing Co, 2000). Hereinafter cited as *New York Herald Index Marriages Deaths Vol 3*.
- ⁷Find A Grave, online www.findagrave.com, Memorial Number 13951116.
- ⁸The Holland Society of New York, *Dutch Reformed Church Records New York and New Jersey* (Provo, Utah: Ancestry.com, 2014), Second River, New Jersey and Newtown, Book 58; baptism of John L. Riker Jr, parents: John L. Riker Sr and Lavinia Smith. Hereinafter cited as *Dutch Reformed Church Records NY and NJ*.
- ⁹Find A Grave, online www.findagrave.com, Memorial Number 13951092.
- ¹⁰*Ibid.*, Memorial Number 13951098.
- ¹¹*New York Times*, Manhattan, New York Co, New York, 1851-Date, 8 August 1867. Hereinafter cited as *New York Times*.
- ¹²1870 U.S. Census New York, Queens Co. Ancestry.com, Provo, Utah. NARA, M593, Roll 1081, Newtown, page 153A.
- ¹³Maher, *New York Herald Index Marriages Deaths Vol 3*.
- ¹⁴*Newtown Register*, 29 August 1918.
- ¹⁵Tuggle, Sharon K. (State Line, Indiana: n.pub., 2023.). Hereinafter cited as *Tuggle, Sharon K.*
- ¹⁶Find A Grave, online www.findagrave.com, Memorial Number 23618471.
- ¹⁷New York, New York City Municipal Deaths 1795-1949, Database Family Search, online <https://familysearch.org/search/collection/2240477>, Municipal Archives City of New York, 1795-1949, Certificate Number 3728.
- ¹⁸*Newtown Register*, 29 August 1918.
- ¹⁹1880 U.S. Census New York, Queens Co. Ancestry.com, Provo, Utah. NARA, T9, Roll 919, Newtown, ED 286, page 199D.
- ²⁰*Newtown Register*, 4 November 1915.
- ²¹*Ibid.*, 29 December 1881.
- ²²*Ibid.*, 21 February 1925.
- ²³*Ibid.*, 3 July 1913, page 1.
- ²⁴*Ibid.*, 4 November 1915.
- ²⁵W. W. Munsell, *History of Queens County, New York* (New York, New York: W. W. Munsell, 1882). Hereinafter cited as *History of Queens County, New York*.
- ²⁶1900 U.S. Census New York, Queens Co. Ancestry.com, Provo, Utah. NARA, T623, Roll 1148, Ward 2, ED 684, page 220B.
- ²⁷*Newtown Register*, 6 November 1902, page 4.
- ²⁸Leverich Memorial Church, online <Web Sites>, <https://qns.com/2009/1/street-renamed-for-church/> <https://leverichmemorial.blogspot.com/p/our-church.html>. Hereinafter cited as Leverich Memorial Church.
- ²⁹*Brooklyn Daily Star*, Brooklyn, New York, 189?-1933. Hereinafter cited as *Brooklyn Daily Star*, 7 January 1922.
- ³⁰*Newtown Register*, 25 November 1909, page 4.
- ³¹Richard B. Leverich will (7 January 1829), Liber HH, page 162; Onondaga Co, NY Surrogate, 401 Montgomery Street, Syracuse, New York 13202. Hereinafter cited as 1829 Administration Richard B. Leverich.
- ³²*Newtown Register*, 3 November 1910, page 5.
- ³³*Ibid.*, 3 July 1913, page 1.
- ³⁴*Ibid.*, 4 November 1915.
- ³⁵Index and Transcripts, online www.ancestry.com, Ancestry (unknown location), Certificate Number 3728.

-
- ³⁶*Newtown Register*, 29 August 1918, page 5.
- ³⁷*Ibid.*, 5 September 1918, page 5.
- ³⁸Find A Grave, online www.findagrave.com, Memorial Number 23618471.
- ³⁹1659-1999 New York Wills and Probate Records, online Ancestry.com, Index and Records, Queens County, New York Surrogate File Number 324-1918.
- ⁴⁰*Newtown Register*, 12 September 1918.
- ⁴¹1920 U.S. Census New York, Queens Co. Ancestry.com, Provo, Utah. NARA, T625, Roll1232, Assembly District 3, ED 164, page 148A.
- ⁴²*Brooklyn Daily Star*, 7 January 1922.
- ⁴³*Newtown Register*, 7 January 1922.
- ⁴⁴*Ibid.*, 21 February 1925.
- ⁴⁵*Ibid.*
- ⁴⁶Find A Grave, online www.findagrave.com, Memorial Number 88405983.
- ⁴⁷New York Wills and Probate Records, Queens County, New York Surrogate File Number 2833-1925.
- ⁴⁸*Ibid.*
- ⁴⁹*Whitney, Alexandra – Correspondent-2000* (New York, New York 10029): Died 1914. Hereinafter cited as *Whitney, Alexandra*.
- ⁵⁰NY Index to Birth Certificates 1866-1909 New York, online ancestry.com, Index (New York Co, New York), Certificate Number 173347.
- ⁵¹Find A Grave, online www.findagrave.com, Memorial Number 58427377.
- ⁵²*New York Times*, 13 December 1900, page 9.
- ⁵³NY Marriage License Indexes, 1907-2018 New York, online www.ancestry.com, Index, Certificate Number 978.
- ⁵⁴New York, NY Index to Death Certificates 1862-1948. Index and Transcripts, Certificate Number 5210.
- ⁵⁵1880 U.S. Census New York, Queens Co, Ancestry.com, Newtown, ED 286, page 199D.
- ⁵⁶1900 U.S. Census New York, Queens Co, Ancestry.com, Queens Ward 2, ED 684, page 220B.
- ⁵⁷1910 U.S. Census New York, Ulster Co. Ancestry.com, Provo, Utah. NARA, T624, Roll 1085, Kingston Ward 7, ED 135, page 179B.
- ⁵⁸1920 U.S. Census New York, Queens Co, Ancestry.com, Queens Assembly District 3, ED 164, page 148A.
- ⁵⁹1930 U.S. Census New York, New York Co. Ancestry.com, Provo, Utah. NARA, T626, ED 31-706, Manhattan, ED 31-561, page 194A.
- ⁶⁰1940 U.S. Census New York, Ulster Co. Ancestry.com, Provo, Utah. NARA, T-627, ED 56-83, Ulster, ED 56-83, page 1115B, Sheet 10B.
- ⁶¹Passport Applications; Record Group 59; (Washington, DC: National Archives), Roll No. 0590, Number 25,504.
- ⁶²Find A Grave, online www.findagrave.com, Memorial Number 58381273.
- ⁶³*New York, NY Extracted Marriage Index, 1866-1937*, [Ancestry Index](http://Ancestry.com), online <https://ancestry.com>,), Certificate Number 598.
- ⁶⁴*New York Herald*, New York, New York, 1840-1920. Hereinafter cited as *New York Herald*, 22 May 1910.
- ⁶⁵*California Death Index 1940-1997*, [FamilySearch Index](http://FamilySearch.org), online <https://familysearch.org>,).
- ⁶⁶*New York Times*, 29 July 1970.
- ⁶⁷1900 U.S. Census New York, Queens Co, Ancestry.com, Queens Ward 2, ED 684, page 220B.
- ⁶⁸1910 U.S. Census New York, Queens Co. Ancestry.com, Provo, Utah. NARA, T624, Roll 1066, Queens Ward 2, ED 1183, page 124B.
- ⁶⁹1920 U.S. Census New York, Queens Co, Ancestry.com, Queens Assembly District 3, ED 180, page 78A.
- ⁷⁰1930 U.S. Census New York, New York Co, Ancestry.com, Manhattan, ED 31-560, page 159A.
- ⁷¹1940 U.S. Census New York, New York Co. Ancestry.com, Provo, Utah. NARA, T627, ED 1364a, Manhattan, ED 1364a, page 15,947A, Sheet 4A.
- ⁷²State Birth Index, 1881-1942 New York, online ancestry.com, Index (Albany, New York), Certificate Number 36412.
- ⁷³Find A Grave, online www.findagrave.com, Memorial Number 58422406.
- ⁷⁴*New York, NY Extracted Marriage Index, 1866-1937*, [Ancestry Index](http://Ancestry.com), Certificate 806.
- ⁷⁵*Newtown Register*, 22 June 1911.
- ⁷⁶1949-2012 Connecticut Death Index, online ancestry.com, Index (Hartford, Connecticut), State File Number 11362.
- ⁷⁷*New York Times*, 27 June 1974.
- ⁷⁸1900 U.S. Census New York, Queens Co, Ancestry.com, Queens Ward 2, ED 684, page 220B.
- ⁷⁹1910 U.S. Census New York, Queens Co, Ancestry.com, Queens Ward 2, ED 1183, page 124B.

⁸⁰1920 U.S. Census New York, Queens Co, Ancestry.com, Queens Assembly District 4, ED 221, page 62B.

⁸¹1930 U.S. Census New York, New York Co, Ancestry.com, Manhattan, ED 31-697, page 215B.

⁸²1940 U.S. Census New York, New York Co, Ancestry.com, Manhattan, ED 31-1189, page 13964A, Sheet 16A.

⁸³1950 U.S. Census New York, New York County. Ancestry.com, Provo, Utah. NARA, Record Group 29, Manhattan, Sheet 9.