

**Individual Narrative of Stephen<sup>8</sup> Duncan Leverich [306]  
Son of Charles<sup>7</sup> Palmer Leverich [142] and Matilda Duncan Gustine  
Husband of Mary Woodward DeForest**

Stephen Duncan Leverich was born on 19 October 1846 at Newtown, Queens County, New York.<sup>1,2</sup> He was baptized 13 June 1847 at the Newtown Presbyterian Church.<sup>3</sup>

Stephen D. Leverich, age 15, was recorded in the 1860 U.S. Census of Newtown, Queens County, New York. His household included his parents Charles P. and Matilda Leverich, ages 49 and 43 respectively; also his siblings Charles D., age 19; James H., age 13; and Matilda, age 9.<sup>4</sup>

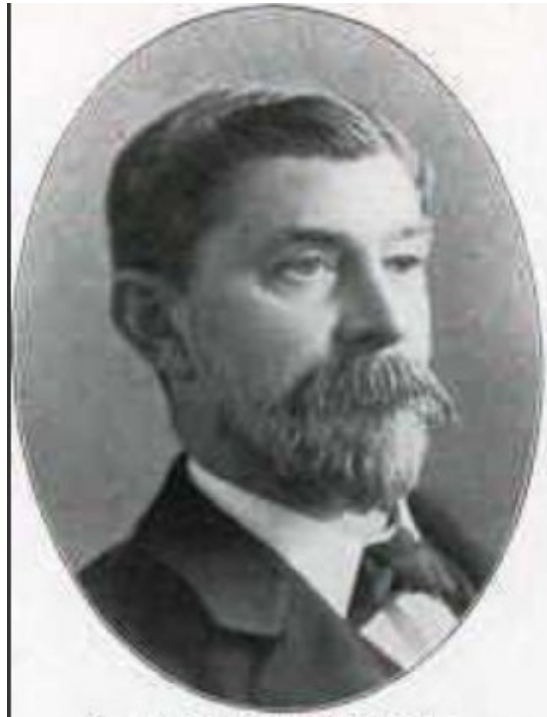
Stephen D. Leverich received elementary schooling at the French and English Institution for Young Gentlemen directed by Elie Charlier in Manhattan, New York County, New York, a prestigious private school for day and boarding students. His brothers Charles and James also attended. He then attended Mount Pleasant Academy in Sing Sing, Westchester County, New York.<sup>5,6</sup>

Stephen Duncan Leverich married Mary Woodward DeForest on 23 June 1869 at New Haven, New Haven County, Connecticut.<sup>7</sup> The marriage took place at the North church which was followed by a brilliant reception at the residence of the bride's father. The display of gifts was "gorgeous", the total value of which was reputed to be \$10,000.<sup>8</sup>

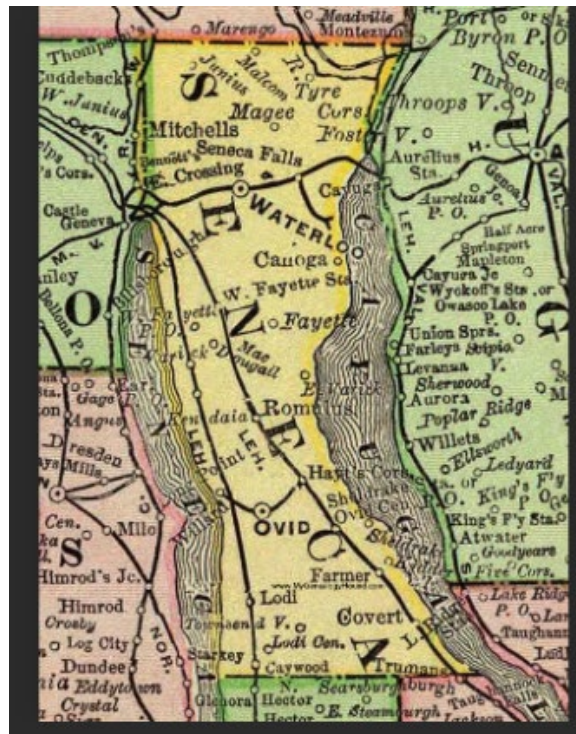
Mary W. DeForest was born 1 December 1845 in New Haven, New Haven County, Connecticut. Her parents were Andrew Woodward DeForest and Lucretia Sturges Bennet.<sup>9</sup>

"Duncan" Leverich, age 24, and his wife Mary, age 23, were recorded in the 1870 U.S. Census of Newtown, Queens County, New York. The household included his parents Chas P. and Matilda D., ages 60 and 50 respectively; also siblings Charles D., age 30; Fanny, age 21; James; and Matilda, age 18.<sup>10</sup>

Stephen D. Leverich is listed in the 1872 New York City Directory as a merchant at 111 Pearl, home L.I. (i.e. Long Island).<sup>11</sup>



In the year 1872 Stephen D. Leverich's father, then president of the Bank of New York, went to Seneca County New York to visit his cousin, Peter Fish. He purchased land for a residence in Ovid Township. Together with some associates he built the Cayuga Lake House. After his father's death, Stephen supervised the erection of a residence on Cayuga Lake which was occupied by his mother for many years. Stephen became greatly attached to Seneca County and his interests were gradually centered there. He was active in the Ovid Drivers Club and was president of the South Jury District Agricultural Association, known as the Ovid Fair. He was elected to the Assembly from Seneca County on the Democratic ticket for the year 1886 and served on the Appropriations, Insurance, and other committees with success.



The exigencies of his business compelled him to give up his residence in Seneca County, but he always retained his affection for the place. Leverich and Company, a brokerage and banking firm dealing in cotton, partnered with his brothers Charles and James, maintained an office at 111 Pearl St. in Manhattan, New York County throughout this period of time (see New York City Directories 1875-1890). The firm experienced financial difficulties in 1878, but appeared to have recovered.<sup>12,13</sup>

Stephen D. Leverich is not found in the population schedules for the 1880 U.S. Census. Stephen is listed on the Agriculture Schedule, recorded as farming in Ovid, Seneca County, New York, 7 June 1880.<sup>14</sup>

Mary Woodward DeForest Leverich died suddenly 31 March 1897 at the Windsor Hotel in Manhattan, New York County, New York. She was buried at the Lake View Cemetery in Interlaken, Seneca County, New York.<sup>15</sup>

Shortly after his wife's death, an attempt was made to blackmail Stephen D. Leverich. Joseph Mintbal, otherwise Joe Miller, who gave his address as 91 Bowery was held in \$2,000 in the Centre Street Court on 12 May 1897 for attempting to blackmail Stephen. Mintbal wrote letters threatening to inform the police that Stephen's wife had been foully dealt with relative to her death on 31 March 1897 unless Stephen paid \$800 for Mintbal's silence. After receiving three such letters, Stephen informed the police and under their instructions he agreed to meet Mintbal. Mintbal kept the appointment made and was arrested after he had received \$30 in marked bills.<sup>16,17</sup>

Stephen D. Leverich retired from business in 1906 when Leverich and Co. was dissolved.<sup>18</sup>

Stephen D. Leverich was listed in the 1911 New York City Directory living at 27 Washington Square North.<sup>19</sup> Stephen D. Leverich was listed in the 1915 New York City Directory living at 27 Washington Square North.<sup>20</sup>

Stephen Duncan Leverich died on 10 October 1916 at Madison, Morris County, New Jersey, at age 69.<sup>21</sup> Stephen was visiting his daughter Mrs. George K. Hooper (Mary Duncan Leverich) at her home in Madison at the time he died. Funeral services were held at his former residence in Kidders, Ovid Township, Seneca County, New York. He was buried at Lake View Cemetery in Interlaken, Seneca County.<sup>22,23</sup>

Stephen Duncan Leverich and Mary Woodward DeForest had one child. Mary (Molly) Duncan Leverich was born 19 March 1871 in Queens County, New York (possibly Manhattan, New York County, New York). Mary married first Ira Alexander Shaler 4 January 1899 in Manhattan. Mary married second George Kennard Hooper 17 January 1907 in Manhattan. Mary died 13 September 1956 in Pasadena, Los Angeles County, California. Mary was recorded in the 1900 Census of Manhattan; 1910 and 1920 Morris County, New Jersey; 1930 and 1940 Los Angeles County, California.<sup>24,25,26,27,28,29,30,31,32,33,34</sup>

Printed on: 17 Feb 2024

Prepared by:

Tom Leverich

28 Saratoga Drive

West Windsor, New Jersey 08550

tomaug12@aol.com

609-275-1239

[www.leverichgenealogy.org](http://www.leverichgenealogy.org)

## Bibliography

1850-1880 1850-1880 U.S. Census Non-Population Schedules. NARA. Ancestry.com, 360 West 4800 North, Provo, Utah 84604.

1860 U.S. Census New York, Queens Co. NARA, M653, Roll 843. Ancestry.com, 360 West 4800 North, Provo, Utah 84604.

1870 U.S. Census New York, Queens Co. NARA, M593, Roll 1081. Ancestry.com, 360 West 4800 North, Provo, Utah 84604.

1900 U.S. Census New York, New York Co. NARA, T623, Roll 1119. Ancestry.com, 360 West 4800 North, Provo, Utah 84604.

1910 U.S. Census New Jersey, Morris Co. NARA, T624, ED 32. Ancestry.com, 360 West 4800 North, Provo, Utah 84604.

1920 U.S. Census New Jersey, Morris Co. NARA, T-625, ED 023. Ancestry.com, 360 West 4800 North, Provo, Utah 84604.

1930 U.S. Census California, Los Angeles Co. NARA, T626. Ancestry.com, 360 West 4800 North, Provo, Utah 84604.

1940 U.S. Census California, Los Angeles Co. NARA, T627, Roll 257. Ancestry.com, 360 West 4800 North, Provo, Utah 84604.

*California Death Index 1940-1997*, FamilySearch, Index, online <https://familysearch.org>.

Charles Henry Pope and Thomas Hooper. *Hooper Genealogy*. Boston, Massachusetts: Charles H. Pope, 1908.

Charlier, Elie. *French and English Institution for Young Gentlemen, Under the Direction of Prof Elie Charlier*. New York, New York: S. W. Green, Printer, 1869.

Death Certificate Mary Leverich Hooper. Ancestry.com, 360 West 4800 North, Provo, Utah 84604.

Find A Grave. Online [www.findagrave.com](http://www.findagrave.com).

*Hartford Daily Courant*, Hartford, Connecticut, 1840-1887, GenealogyBank.

*New York Herald*, New York, New York, 1840-1920, New York State Library.

*New York NY City Directory 1872*. New York, New York: TROW, 1872.

*New York NY City Directory 1911*. New York, New York: Trow, 1911.

*New York NY City Directory 1915*. New York, New York: Polk, 1915.

*New York Times*, Manhattan, New York Co, New York, 1851-Date, NY Times Article Archive.

*New York World*, New York, New York, 1860-1931, Old Fulton New York Post Cards.

*Newtown Register*, Newtown, Queens Co, New York, 1873-1935, Old Fulton New York Post Cards.

*Pasadena Star News*, Pasadena, Los Angeles County, California, 1884 to date, Ancestry.com.

White, Arthur. "Newtown Presbyterian Church Records." 1922, Transcription. New York Public Library, Stephen A. Schwarzman Building, Irma and Paul Milstein Division of U.S. History, Local History and Genealogy, 5th Avenue and 42nd Street, Manhattan, New York, New York 10018. Originally Published in the New York Genealogical and Biographical Record: 55 (1924) 162-167, 281-291, 383-400; 56 (1925) 73-83, 173-187, 353-359. Subsequently published in *Collections NY G&B Society*, Volume 8. Original transcript is part of the NYG&B Manuscript Collections, which are now held by the New York Public Library, Archives Division. The original Church records remain at the Church, 54-05 Seabury Street Queens Blvd and 54th Avenue, Elmhurst, Queens County, New York.

## Endnotes

- 
- <sup>1</sup>*Newtown Register*, Newtown, Queens Co, New York, 1873-1935. Hereinafter cited as *Newtown Register*, 19 October 1846.
- <sup>2</sup>Find A Grave, online <[www.findagrave.com](http://www.findagrave.com)>, Memorial Number 89243935. Hereinafter cited as Find A Grave.
- <sup>3</sup>Arthur White, "Newtown Presbyterian Church Records," 1922, Transcription, New York Public Library, Stephen A. Schwarzman Building, Irma and Paul Milstein Division of U.S. History, Local History and Genealogy, 5th Avenue and 42nd Street, Manhattan, New York, New York 10018, Baptisms 1847. Hereinafter cited as "Newtown Presbyterian Records."
- <sup>4</sup>1860 U.S. Census New York, Queens Co. Ancestry.com, Provo, Utah. NARA, M653, Roll 843, page 165.
- <sup>5</sup>Elie Charlier, *French and English Institution for Young Gentlemen, Under the Direction of Prof Elie Charlier* (New York, New York: S. W. Green, Printer, 1869). Hereinafter cited as *French and English Institution for Young Gentlemen*.
- <sup>6</sup>*Newtown Register*, 19 October 1916, page 5.
- <sup>7</sup>*New York Times*, Manhattan, New York Co, New York, 1851-Date, 28 June 1869. Hereinafter cited as *New York Times*.
- <sup>8</sup>*Hartford Daily Courant*, Hartford, Connecticut, 1840-1887. Hereinafter cited as *Hartford Daily Courant*, 26 June 1869.
- <sup>9</sup>Find A Grave, online [www.findagrave.com](http://www.findagrave.com), Memorial Number 116015557.
- <sup>10</sup>1870 U.S. Census New York, Queens Co. Ancestry.com, Provo, Utah. NARA, M593, Roll 1081, page 153B.
- <sup>11</sup>*New York NY City Directory 1872* (New York, New York: TROW, 1872). Hereinafter cited as *New York NY City Directory 1872*.
- <sup>12</sup>*Newtown Register*, 19 October 1916, page 5.
- <sup>13</sup>*New York Times*, 16 February 1878.
- <sup>14</sup>1850-1880 1850-1880 U.S. Census Non-Population Schedules. Ancestry.com, Provo, Utah. NARA.
- <sup>15</sup>Find A Grave, online [www.findagrave.com](http://www.findagrave.com), Memorial Number 116015557.
- <sup>16</sup>*New York Times*, 13 May 1897.
- <sup>17</sup>*New York World*, New York, New York, 1860-1931. Hereinafter cited as *New York World*, 1? May 1897.
- <sup>18</sup>*Newtown Register*, 19 October 1916, page 5.
- <sup>19</sup>*New York NY City Directory 1911* (New York, New York: Trow, 1911). Hereinafter cited as *New York NY City Directory 1911*.
- <sup>20</sup>*New York NY City Directory 1915* (New York, New York: Polk, 1915). Hereinafter cited as *New York NY City Directory 1915*.
- <sup>21</sup>*Newtown Register*, 19 October 1916, page 5.
- <sup>22</sup>*Ibid.*
- <sup>23</sup>Find A Grave, online [www.findagrave.com](http://www.findagrave.com), Memorial Number 89243935.
- <sup>24</sup>*Ibid.*, Memorial Number 85427859.
- <sup>25</sup>*New York Herald*, New York, New York, 1840-1920. Hereinafter cited as *New York Herald*, 8 January 1899.
- <sup>26</sup>Charles Henry Pope and Thomas Hooper, *Hooper Genealogy* (Boston, Massachusetts: Charles H. Pope, 1908), page 222. Hereinafter cited as *Hooper Genealogy*.
- <sup>27</sup>*California Death Index 1940-1997*, FamilySearch Index, online <https://familysearch.org>).
- <sup>28</sup>*Pasadena Star News*, Pasadena, Los Angeles County, California, 1884 to date. Hereinafter cited as *Pasadena Star News*, 14 September 1956.
- <sup>29</sup>Mary Leverich Hooper, Death Certificate (1956), Ancestry.com, 360 West 4800 North, Provo, Utah 84604, Registration District 7069, Registrar's Number 1290. Hereinafter cited as Hooper, Mary Leverich.
- <sup>30</sup>1900 U.S. Census New York, New York Co. Ancestry.com, Provo, Utah. NARA, T623, Roll 1119, Manhattan, ED 106, page 226B.
- <sup>31</sup>1910 U.S. Census New Jersey, Morris Co. Ancestry.com, Provo, Utah. NARA, T624, ED 32, Madison, ED 019, page 42B.
- <sup>32</sup>1920 U.S. Census New Jersey, Morris Co. Ancestry.com, Provo, Utah. NARA, T-625, ED 023, Madison, ED 023, page 134B.
- <sup>33</sup>1930 U.S. Census California, Los Angeles Co. Ancestry.com, Provo, Utah. NARA, T626, Pasadena, ED 19-1250, page 183B.

---

<sup>34</sup>1940 U.S. Census California, Los Angeles Co. Ancestry.com, Provo, Utah. NARA, T627, Roll 257, Pasadena, ED 19-444, Sheet 62A, page 8563.