

**Individual Narrative of Charles<sup>8</sup> Edward Leveridge [387]  
Son of John<sup>7</sup> Leveridge [204] and Adeline Matilda Creemer  
Husband of Elizabeth Catherine Smith**

Charles Edward Leveridge was born on 10 July 1819 at Manhattan, New York County, New York.<sup>1</sup>

Charles E. Leveridge married Elizabeth Catherine Smith on 7 January 1843 at Manhattan, New York County, New York.<sup>2,3</sup>

Elizabeth C. Smith was born circa 1823-1826 in Sag Harbor, Suffolk County, New York. Elizabeth was the daughter of Captain Benjamin Smith and his wife Mary.<sup>4,5,6,7,8</sup>

Charles E. Leveridge lived on the south shore of Staten Island (Richmond County), New York as early as circa 1845. Several of Charles' children were baptized 10 October 1845 at the Reformed Dutch Church of Port Richmond. Charles' residence was known as "Hay Hill" and was located on what was then (i.e. 1930) Richmond Avenue in Eltingville. An 1853 map of Staten Island indicated that Charles owned considerable property on the South Shore.<sup>9,10,11</sup>

Charles E. Leveridge, age 28 farmer, was recorded in the 1850 U.S. Census of Southfield, Richmond County (Staten Island), New York. Charles' household included his wife Elizabeth, age 25, and children: Charles E. Jr., age 7; Benjamin S., age 4; and John, age 2.<sup>12</sup>

By 1855 Charles E. Leveridge, had relocated to Manhattan Ward 7, New York County, New York. Charles, age 32 Commercial Merchant, was recorded in the 1855 New York State Census of Manhattan. Charles' household included his wife Elizabeth, age 29, and children: Charles E., age 12; Benjamin S., age 9; Mary A., age 3; and Frances L., age 2.<sup>13</sup>

Charles E. Leveridge was listed in the 1857 New York City Directory, merchant 82 Water Street, home 65 Monroe.<sup>14</sup>

Charles E. Leveridge, age 39 merchant, was recorded in the 1860 U.S. Census of Manhattan, Ward 21 District 4, New York County, New York. Charles' household included his wife Elizabeth, age 34, and children: Charles, age 16; Benjamin, age 14; Mary, age 8; Frances, age 6; Elizabeth, age 4; and Virgil, age 1.<sup>15</sup>

Charles E. Leveridge's mother-in-law Mary Smith, widow of the late Captain Benjamin, died 28 December 1864. Her funeral was held from Charles' residence located at 317 East 36th Street.<sup>16</sup>

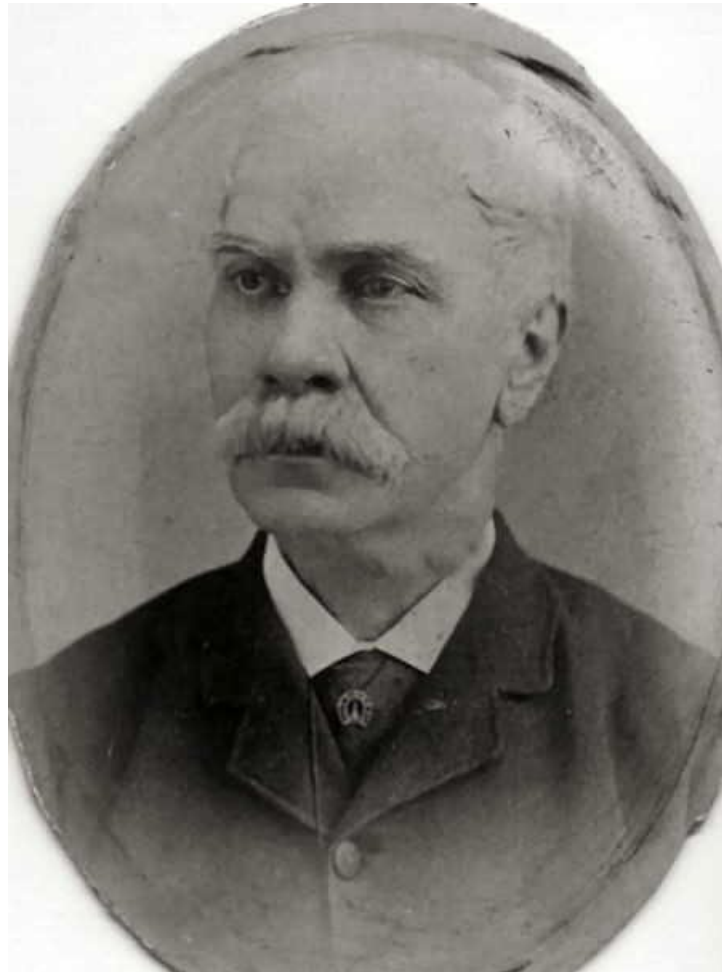
As early as 1869 Charles E. Leveridge was employed as a storekeeper for the Customs Bureau, U.S. Department of the Treasury. A store keeper, also known as a stock controller or store manager, played a crucial role in ensuring the smooth operation and efficiency of a stockroom or warehouse. They were responsible for managing the inventory, ensuring accurate record-keeping, and fulfilling orders accurately and efficiently. Charles apparently retained this position up until the time he died.<sup>17</sup>

By 1870, Charles E. Leveridge had relocated to Union County, New Jersey. Charles, age 50 storekeeper, was recorded in the 1870 U.S. Census of Westfield, Union County, New Jersey. Charles' household included his wife Elizabeth, age 44, and children: Mary A., age 18; Frances L., age 16; Elizabeth C., age 14; Levina, age 11; Gilbert, age 9; Josephine, age 7; and Ella L., age 2.<sup>18</sup>

C. E. Leveridge was listed in the 1872 Elizabeth NJ City Directory (Stephens & Leveridge) living on Union near Presbyterian Church. This directory, in addition to Elizabeth, includes Rahway and Plainfield, as well as a business directory for Westfield. The C. E. Leveridge entry is listed in the Rahway section.<sup>19</sup>

Charles E. Leveridge, age 60 U.S. Storekeeper, was recorded in the 1880 U.S. Census of Westfield, Union County, New Jersey. Charles' household included his wife Elizabeth C., age 57, and children: Fanny L., age 26; Elizabeth C., age 23; Levinia, age 21; Gilbert, age 19; Josephine, age 17; and Ella L., age 12.<sup>20</sup>

Charles E. Leveridge, occupation bonded warehouse, was listed in the 1886 Elizabeth NJ City Directory living at 523 Monroe Avenue.<sup>21</sup>



Charles Edward Leveridge  
Submitted to Ancestry.com by dori1620 16 August 2015

Elizabeth C. (Smith) Leveridge died 15 August 1889 in Elizabeth, Union County, New Jersey. Elizabeth was living at 523 Monroe Avenue at the time she died. Elizabeth was buried at Greenwood Cemetery in Brooklyn, Kings County, New York.<sup>22,23</sup>

Charles E. Leveridge was listed in the 1890 Elizabeth NJ City Directory living at 523 Monroe Avenue.<sup>24</sup>

Charles E. Leveridge, merchant, widowed died 3 September 1890 at Elizabeth, Union County, New Jersey. Charles was buried at Greenwood Cemetery in Brooklyn, Kings County, New York.<sup>25,26,27</sup>

Charles Edward Leveridge and Elizabeth Catherine Smith had eleven children, eight of whom survived to adulthood.

- i. Charles Edward Leveridge, Jr. was born circa October 1843 in Manhattan, New York County, New York. Charles married Delineatta C. Ahlum 11 October 1866 probably in Manhattan. Charles died 21 November 1913 in Brooklyn, Kings County, New York. Charles was buried at Greenwood Cemetery in Brooklyn. Charles was recorded in the 1870 U.S. Census of New York County, New York; 1880 and 1900 Essex County, New Jersey; 1910 Morris County, New Jersey.<sup>28,29,30,31,32,33,34</sup>
- ii. Benjamin Smith Leveridge was born circa February 1846, probably in Staten Island, Richmond County, New York. Benjamin was not married. Benjamin died 24 August 1863 age 17 years 6 months. Benjamin was buried at Greenwood Cemetery in Brooklyn, Kings County, New York. Benjamin was recorded in the 1850 U.S. Census of Richmond Co, New York; 1855 N.Y. State Census and 1860 U.S. Census of Manhattan, New York County, New York.<sup>35,36,37,38,39,40</sup>
- iii. John Leveridge was born circa 1849 probably in Staten Island, Richmond County, New York. John died 5 January 1853 age 4 in Manhattan, New York County, New York. John was buried at Greenwood Cemetery in Brooklyn, Kings County, New York. John was recorded in the 1850 U.S. Census of Richmond County, New York.<sup>41,42,43</sup>
- iv. Mary Adeline Leveridge was born circa January 1852 in Staten Island, Richmond County, New York. Mary married George M. Tice 22 January 1879 in Westfield, Union County, New Jersey. Mary died 8 March 1926 in Westfield. Mary was buried at Fairview Cemetery in Westfield. Mary was recorded in the 1880, 1900, 1910, and 1920 U.S. Census of Union County, New Jersey.<sup>44,45,46,47,48,49,50</sup>
- v. Frances L. Leveridge was born circa March 1854, probably in Staten Island, Richmond County, New York, but possibly Manhattan, New York County, New York. Frances was never married. Frances died 5 March 1926 in Brooklyn, Kings County, New York. Frances was buried at Greenwood Cemetery in Brooklyn. Frances was recorded in the 1870 and 1880 U. S. Census of Union County, New Jersey; 1900 Chesapeake, Elizabeth City County, Virginia; 1920 Kings County, New York.<sup>51,52,53,54,55,56</sup>
- vi. Elizabeth C. Leveridge was born circa 1856 in Manhattan, New York County, New York. Elizabeth was not married. Elizabeth died 4 November 1886 in Elizabeth, Union County, New Jersey. Elizabeth was buried at Greenwood Cemetery in Brooklyn, Kings County, New York. Elizabeth was recorded in the 1870 and 1880 U.S. Census of Union County, New Jersey.<sup>57,58,59,60</sup>
- vii. Virgil Leveridge was born circa 1858 in Manhattan, New York County, New York. Virgil died as a child before 1870. Virgil is found in the 1860 U.S. Census of Manhattan Ward 21 District 4, but not the 1870 or subsequent U.S. Censuses. Virgil was probably buried at Greenwood Cemetery in Brooklyn, Kings County, New York.<sup>61</sup>
- viii. Lavinia Leveridge was born 5 March 1859 in Manhattan, New York County, New York. Lavinia never married. Lavinia died 25 June 1951 in White Plains, Westchester County, New York. Lavinia was buried at Greenwood Cemetery in Brooklyn, Kings County, New York. Lavinia was recorded in the 1880 U. S. Census of Union County, New Jersey; 1900 New York County, New York; 1910 Middlesex County, New Jersey; 1920 Kings County, New York; 1930 Pinellas County, Florida; 1940 Westchester County, New York.<sup>62,63,64,65,66,67,68,69,70</sup>
- ix. Gilbert Leveridge was born circa 1861 in Manhattan, New York County, New York. Gilbert was not married. Gilbert died 4 April 1888 in Elizabeth, Union County, New Jersey. Gilbert was buried at Greenwood Cemetery in Brooklyn, Kings County, New York. Gilbert was recorded in the 1870 and 1880 U.S. Census of Union County, New Jersey.<sup>71,72,73,74</sup>
- x. Josephine Leveridge born 24 May 1866 in Manhattan, New York County, New York. Josephine married Peter P. Runyon 15 October 1902 in Brooklyn, Kings County, New York. Josephine died 15 December 1932 in Brooklyn. Josephine was buried at the Elmwood Cemetery in New Brunswick, Middlesex County, New Jersey. Josephine was recorded in the 1880 U.S. Census of Union County, New Jersey; 1900, 1910, 1920 Middlesex County, New Jersey; 1930 Pinellas County, Florida.<sup>75,76,77,78,79,80,81</sup>

- xi. Ella Louise Leveridge (aka Louise Ella Leveridge) was born either 11 October 1867 or 10 November 1868. She was Ella L. in pre-marriage census records (1870 and 1880) and Louise L. Smith post-marriage census records. Her gravestone reads "Louise". The 1867 birth date is replicated in multiple Ancestry.com family trees without a specific source being cited. The 1868 date is supported by multiple census records and "Louise's" statement on the ship passenger list for individuals arriving in New York in 1927. Louise married Fred Delysle Smith 16 December 1891 in Elizabeth, Union County, New Jersey. Louise died 2 April 1948 in Scarsdale, Westchester County, New York. Louise was buried at Greenwood Cemetery in Brooklyn, Kings County, New York. Louise was recorded in the 1870 and 1880 U.S. Census of Union County, New Jersey; 1900, 1910, and 1920 Kings County, New York; 1940 Westchester County, New York.<sup>82,83,84,85,86,87,88,89,90,91,92</sup>

Multiple family trees at Ancestry.com record an Ann F. Leveridge as the youngest child of Charles E. Leveridge Jr. and Elizabeth C. Smith. This Ann F. Leveridge is supposed to have been born after 1868 and died in 1873. However, the 1870 and 1880 U. S. Census records for Charles E. Leveridge Jr. do not show a child named Ann F. The New York Evening Post published on 30 June 1873 reports the death of an Annie F. Leveridge in Albany, New York, the daughter of Charles William and Annie Leveridge (actually Leverich).<sup>93,94,95</sup>

Printed on: 14 Dec 2024

Prepared by:

Tom Leverich

28 Saratoga Drive

West Windsor, New Jersey 08550

tomaug12@aol.com

609-275-1239

www.leverichgenealogy.org

## Bibliography

- 1850 U.S. Census New York, Richmond Co. NARA, M432. Ancestry.com, 360 West 4800 North, Provo, Utah 84604.
- 1855 New York State Census, New York Co. New York State Archives. Church of Jesus Christ of Latter Day Saints, 35 North West Temple St, Salt Lake City, Utah 84150.
- 1860 U.S. Census New York, New York Co. NARA, M653. Ancestry.com, 360 West 4800 North, Provo, Utah 84604.
- 1870 U.S. Census New Jersey, Union Co. NARA, M593. Ancestry.com, 360 West 4800 North, Provo, Utah 84604.
- 1870 U.S. Census New York, New York Co. NARA, M593. Ancestry.com, 360 West 4800 North, Provo, Utah 84604.
- 1880 U.S. Census New Jersey, Essex Co. NARA, T9. Ancestry.com, 360 West 4800 North, Provo, Utah 84604.
- 1880 U.S. Census New Jersey, Middlesex Co. NARA, T9. Ancestry.com, 360 West 4800 North, Provo, Utah 84604.
- 1880 U.S. Census New Jersey, Union Co. NARA, T9. Ancestry.com, 360 West 4800 North, Provo, Utah 84604.
- 1900 U. S. Census Virginia, Elizabeth City Co. NARA, T623. Ancestry.com, 360 West 4800 North, Provo, Utah 84604.
- 1900 U.S. Census New Jersey, Essex Co. NARA, T623. Ancestry.com, 360 West 4800 North, Provo, Utah 84604.
- 1900 U.S. Census New Jersey, Middlesex County. NARA, T623. Ancestry.com, 360 West 4800 North, Provo, Utah 84604.
- 1900 U.S. Census New Jersey, Union Co. NARA, T623. Ancestry.com, 360 West 4800 North, Provo, Utah 84604.
- 1900 U.S. Census New York, Kings Co. NARA, T623. Ancestry.com, 360 West 4800 North, Provo, Utah 84604.
- 1900 U.S. Census New York, New York Co. NARA, T623. Ancestry.com, 360 West 4800 North, Provo, Utah 84604.
- 1910 U. S. Census New Jersey, Middlesex Co. NARA, T624. Ancestry.com, 360 West 4800 North, Provo, Utah 84604.
- 1910 U.S. Census New Jersey, Morris Co. NARA, T624. Ancestry.com, 360 West 4800 North, Provo, Utah 84604.
- 1910 U.S. Census New Jersey, Union Co. NARA, T624. Ancestry.com, 360 West 4800 North, Provo, Utah 84604.
- 1910 U.S. Census New York, Kings Co. NARA, T624. Ancestry.com, 360 West 4800 North, Provo, Utah 84604.
- 1920 U.S. Census New Jersey, Middlesex Co. NARA, T625. Ancestry.com, 360 West 4800 North, Provo, Utah 84604.
- 1920 U.S. Census New Jersey, Union Co. NARA, T625. Ancestry.com, 360 West 4800 North, Provo, Utah 84604.
- 1920 U.S. Census New York, Kings Co. NARA, T625. Ancestry.com, 360 West 4800 North, Provo, Utah 84604.
- 1930 U.S. Census Florida, Pinellas Co. NARA, T626. Ancestry.com, 360 West 4800 North, Provo, Utah 84604.
- 1940 U.S. Census New York, Westchester Co. NARA, T627, Ancestry.com, 360 West 4800 North, Provo, Utah 84604.
- Brooklyn Daily Eagle*, Brooklyn, Kings Co, New York, 1841-1955, 1960-1963. Brooklyn Daily Eagle On-line 1841-1902.
- Elizabeth NJ City Directory 1872*. Albany, New York: Fitzgerald, Dillon, & Co, 1872.
- Elizabeth NJ City Directory 1886*. Elizabeth, New Jersey: Cook & Hall, 1886.

*Elizabeth NJ City Directory 1890*. Elizabeth, New Jersey: Cook & Hall, 1890.

Find A Grave. Online [www.findagrave.com](http://www.findagrave.com).

Leng, Charles W. and Davis. William T. *Staten Island and Its People*. New York, New York: Lewis Historical Publishing Co, 1930.

Leverich, Susan M. Papers; Manuscript Collection Family Artifacts. Letters, Journals, Documents, Photographs, Stephen P. Shaw, Custodian, Chester, Connecticut. This collection was donated to the New England Historic Genealogical Society in two installments: 20 October 2017 and 14 April 2018. See announcement "American Ancestors," Volume 19, No. 2, Summer 2018, pages 56-57.

*Long Island Star/Brooklyn Evening Star*, Brooklyn, Kings Co, New York, 1809-1840; 1841-1863. Brooklyn Historical Society, 128 Pierrepont St, Brooklyn, New York 11201.

Morris, Ira K. *Memorial History of Staten Island, NY*. New Brighton, Staten Island, New York: Ira K. Morris, 1898-1900.

*New Jersey Deaths and Burials 1720-1971*. Family Search Index, online [www.familysearch.org](http://www.familysearch.org).

New Jersey Deaths and Burials 1798-1971. Ancestry.com Index, 360 West 4800 North, Provo, Utah 84604.

*New Jersey Marriage Records 1670-1965*. Ancestry.com Index, 360 West 4800 North, Provo, Utah 84604.

New York Death Index 1852-1956. Ancestry.com Index, 360 West 4800 North, Provo, Utah 84604.

*New York Herald*, New York, New York, 1840-1920, New York State Library.

*New York NY City Directory 1857*. New York, New York: John F. Trow, 1857.

*New York Times*, Manhattan, New York Co, New York, 1851-Date, NY Times Article Archive.

New York, NY Index to Birth Certificates 1866-1909. Ancestry.com Index, 360 West 4800 North, Provo, Utah 84604.

New York, NY Index to Death Certificates 1862-1948. Ancestry.com Index and Transcripts, 360 West 4800 North, Provo, Utah 84604.

*New-York Evening Post*, New York, New York, 1832-1920, GenealogyBank.

*NY Arriving Passenger and Crew Lists 1920-1957*, Ancestry.com Index, 360 West 4800 North, Provo, Utah 84604.

*The Courier-News*, Bridgewater, New Jersey, 1884-date, Newspapers.com.

*The Reporter Dispatch*, White Plains, Westchester Co, NY, 1941-1998, Ancestry.com.

Tuggle, Sharon K. State Line, Indiana. "Hope" Family Tree at Ancestry.com.

*U.S. Register of Civil, Military, and Naval Service, 1863-1959*. U.S. Department of Commerce and Labor, Bureau of Census. Salem, Oregon: Oregon State Library, 1887.

*U.S. School Catalogs, 1765-1935*, American Antiquarian Society, Database Ancestry.com.

Vosburgh, Royden Woodward. *Reformed Dutch Church Port Richmond Records*. New York, New York: NY Genealogical and Biographical Society.

## Endnotes

- 
- <sup>1</sup>Leverich, Susan M. Papers; Manuscript Collection Family Artifacts. Journals, Documents, Photographs, Letters. Stephen P. Shaw, Custodian, Chester, Connecticut. This collection was donated to the New England Historic Genealogical Society in two installments: 20 October 2017 and 14 April 2018. See announcement "American Ancestors," Volume 19, No. 2, Summer 2018, pages 56-57. "Leveridge Family", 1 of 3 pages, probably from Isabella A. Miller, sister-in-law of Cornelius Leveridge (brother of Charles E. Leveridge), to Susan M. Leverich.
- <sup>2</sup>*Long Island Star/Brooklyn Evening Star*, Brooklyn, Kings Co, New York, 1809-1840, 1841-1863. Brooklyn Historical Society, 7 January 1843, page 2.
- <sup>3</sup>*Tuggle, Sharon K.*, State Line, Indiana. "Hope" Family Tree at Ancestry.com. Middle name of Catherine for Elizabeth Smith.
- <sup>4</sup>1855 New York State Census, New York Co. Church of Jesus Christ of Latter Day Saints, Provo, Utah. New York State Archives. Manhattan Ward 7, E.D. 1, Household 382.
- <sup>5</sup>New York Index to Death Certificates 1862-1948. Index and Transcripts, Ancestry.com, Provo, Utah. Death Certificate Number 5242: Frances L. Leveridge, daughter of Elizabeth C. Smith Leveridge, identifies mother's birth place as Sag Harbor, LI (Long Island) which is located in Suffolk County, New York.
- <sup>6</sup>1860 U.S. Census New York, New York Co. Ancestry.com, Provo, Utah. NARA, M653, Manhattan Ward 21 District 4, page 947.
- <sup>7</sup>1870 U.S. Census New Jersey, Union Co. Ancestry.com, Provo, Utah. NARA, M593, Westfield, page 828 A.
- <sup>8</sup>1880 U.S. Census New Jersey, Union Co. Ancestry.com, Provo, Utah. NARA, T9, Westfield, ED 190, page 576 C.
- <sup>9</sup>Royden Woodward Vosburgh, compiler, *Reformed Dutch Church Port Richmond Records*. New York, New York: NY Genealogical and Biographical Society, page 54.
- <sup>10</sup>Charles W. and Davis. William T. Leng, *Staten Island and Its People*. New York, New York: Lewis Historical Publishing Co, 1930, Volume 2, page 920.
- <sup>11</sup>Ira K. Morris, *Memorial History of Staten Island, NY*. New Brighton, Staten Island, New York: Ira K. Morris, 1898-1900, Volume 2, page 412.
- <sup>12</sup>1850 U.S. Census New York, Richmond Co. Ancestry.com, Provo, Utah. NARA, M432, Southfield, page 68 B.
- <sup>13</sup>1855 New York State Census, New York Co, Church of Jesus Christ of Latter Day Saints, Provo, Utah. Manhattan Ward 7, E.D. 1, Household 382.
- <sup>14</sup>*New York NY City Directory 1857*. New York, New York: John F. Trow, 1857..
- <sup>15</sup>1860 U.S. Census New York, New York Co. Ancestry.com, Provo, Utah. Manhattan Ward 21 District 4, page 947.
- <sup>16</sup>*New York Times*, Manhattan, New York Co, New York, 1851-Date. 29 December 1864. Hereinafter cited as New York Times.
- <sup>17</sup>Bureau of Census U.S. Department of Commerce and Labor, *U.S. Register of Civil, Military, and Naval Service, 1863-1959*. Salem, Oregon: Oregon State Library, 1887. Editions published for 1869 (page 125), 1871 (page 123), 1881 (page 181), and 1889 (page 287).
- <sup>18</sup>1870 U.S. Census New Jersey, Union Co. Ancestry.com, Provo, Utah. Westfield, page 828 A.
- <sup>19</sup>*Elizabeth NJ City Directory 1872*. Albany, New York: Fitzgerald, Dillon, & Co, 1872.
- <sup>20</sup>1880 U.S. Census New Jersey, Union Co, Ancestry.com, Provo, Utah. Westfield, ED 190, pager 576 C.
- <sup>21</sup>*Elizabeth NJ City Directory 1886*. Elizabeth, New Jersey: Cook & Hall, 1886.
- <sup>22</sup>*New York Times*, 19 August 1889.
- <sup>23</sup>Find A Grave, online [www.findagrave.com](http://www.findagrave.com), Memorial Number 11075147. Hereinafter cited as Find a Grave.
- <sup>24</sup>*Elizabeth NJ City Directory 1890*. Elizabeth, New Jersey: Cook & Hall, 1890.
- <sup>25</sup>*New Jersey Deaths and Burials 1720-1971*. Family Search Index, online <https://familysearch.org>, LDS Microfilm Number 589788.
- <sup>26</sup>*New York Herald*, New York, New York, 1840-1920. Hereinafter cited as New York Herald, 5 September 1890, page 1.
- <sup>27</sup>Find A Grave, online [www.findagrave.com](http://www.findagrave.com), Memorial Number 11075066.
- <sup>28</sup>1900 U.S. Census New Jersey, Essex Co. Ancestry.com, Provo, Utah. NARA, T623, ED 0075, East Orange Ward 3, ED 176, page 18.
- <sup>29</sup>*New York Herald*, 13 October 1866.
- <sup>30</sup>New York, NY Index to Death Certificates 1862-1948. Ancestry.com Index, Provo, Utah. Certificate Number 21370.

- 
- <sup>31</sup>Find A Grave, online [www.findagrave.com](http://www.findagrave.com), Memorial Number 11075078.
- <sup>32</sup>1870 U.S. Census New York, New York Co. Ancestry.com, Provo, Utah. NARA, M593, Manhattan Ward 19 District 12, page 11 B.
- <sup>33</sup>1880 U.S. Census New Jersey, Essex Co. Ancestry.com, Provo, Utah. NARA, T9, East Orange, ED 098, page 498 A.
- <sup>34</sup>1910 U.S. Census New Jersey, Morris Co. Ancestry.com, Provo, Utah. NARA, T624, Boonton, ED 034, page 25 A.
- <sup>35</sup>*U.S. School Catalogs, 1765-1935*, American Antiquarian Society, Database Ancestry.com, Provo, Utah. New York City Free Academy, page 20, number 225.
- <sup>36</sup>*New York Times*, 25 August 1863.
- <sup>37</sup>Find A Grave, online [www.findagrave.com](http://www.findagrave.com), Memorial Number 11075041.
- <sup>38</sup>1850 U.S. Census New York, Richmond Co. Ancestry.com, Provo, Utah. Southfield, page 68 B.
- <sup>39</sup>1855 New York State Census, New York Co. Church of Jesus Christ of Latter Day Saints, Manhattan Ward 7, E.D. 1, Household Number 382.
- <sup>40</sup>1860 U.S. Census New York, New York Co. Ancestry.com, Provo, Utah. Manhattan Ward 21, District 4, page 948.
- <sup>41</sup>*New-York Evening Post*, New York, New York, 1832-1920. 6 January 1853. Hereinafter cited as *New-York Evening Post*.
- <sup>42</sup>Find A Grave, online [www.findagrave.com](http://www.findagrave.com), Memorial Number 11075458.
- <sup>43</sup>1850 U.S. Census New York, Richmond Co. Ancestry.com, Provo, Utah. Southfield, page 69 A.
- <sup>44</sup>1900 U.S. Census New Jersey, Union Co. Ancestry.com, Provo, Utah. NARA, T623, Westfield, ED 120, page 8.
- <sup>45</sup>*New Jersey Marriage Records 1670-1965*, Ancestry.com Index, Provo Utah. LDS Microfilm Number 004209868.
- <sup>46</sup>*The Courier-News*, Bridgewater, New Jersey, 1884-date. 8 March 1926. Hereinafter cited as *Courier-News*.
- <sup>47</sup>Find A Grave, online [www.findagrave.com](http://www.findagrave.com), Memorial Number 71443635.
- <sup>48</sup>1880 U.S. Census New Jersey, Union Co. Ancestry.com, Provo, Utah. NARA, T9, Westfield, ED 190, page 581 B.
- <sup>49</sup>1910 U.S. Census New Jersey, Union Co. Ancestry.com, Provo, Utah. NARA, T624, Westfield Ward 1, ED 116, page 19 A.
- <sup>50</sup>1920 U.S. Census New Jersey, Union Co. Ancestry.com, Provo, Utah. NARA, T625, Westfield Ward 1, ED 164, page 4 B.
- <sup>51</sup>1900 U. S. Census Virginia, Elizabeth City Co. Ancestry.com, Provo, Utah. NARA, T623, Chesapeake, ED 009, page 12.
- <sup>52</sup>New York, New York Index to Death Certificates 1862-1948. Ancestry.com Index, Provo, Utah. Certificate Number 5242.
- <sup>53</sup>Find A Grave, online [www.findagrave.com](http://www.findagrave.com), Memorial Number 11075159.
- <sup>54</sup>1870 U.S. Census New Jersey, Union Co. Ancestry.com, Provo, Utah. NARA, M593, Westfield, page 828 A.
- <sup>55</sup>1880 U.S. Census New Jersey, Union Co. Ancestry.com, Provo, Utah. NARA, T9, Westfield, ED 190, page 576 C.
- <sup>56</sup>1920 U.S. Census New York, Kings Co. Ancestry.com, Provo, Utah. NARA, T625, Brooklyn Assembly District 10, ED 1643, page 1 A.
- <sup>57</sup>*New Jersey Deaths and Burials 1720-1971*. Family Search Index, online <https://familysearch.org> LDS Microfilm Number 589309.
- <sup>58</sup>Find A Grave, online [www.findagrave.com](http://www.findagrave.com), Memorial Number 67261191.
- <sup>59</sup>1870 U.S. Census New Jersey. Union Co. Ancestry.com, Provo, Utah. NARA, M593, Westfield, page 828 A.
- <sup>60</sup>1880 U.S. Census New Jersey. Union Co. Ancestry.com, Provo, Utah. NARA, T9, Westfield, ED 190, page 576 C.
- <sup>61</sup>1860 U.S. Census New York, New York Co. Ancestry.com, Provo, Utah. NARA, M653, Manhattan Ward 21 District 4, page 948.
- <sup>62</sup>*The Reporter Dispatch*, White Plains, Westchester Co, NY, 1941-1998. 25 June 1951: White Plains, Westchester County, New York.
- <sup>63</sup>New York Death Index 1852-1956. Ancestry.com Index, Provo, Utah. Certificate Number 40264.
- <sup>64</sup>Find A Grave, online [www.findagrave.com](http://www.findagrave.com), Memorial Number 11074608.
- <sup>65</sup>1880 U.S. Census New Jersey, Union Co. Ancestry.com, Provo, Utah. NARA, T9, Westfield, ED 190, page 576 C.
- <sup>66</sup>1900 U.S. Census New York, New York Co. Ancestry.com, Provo, Utah. NARA, T623, Manhattan, ED 740, page 9.
- <sup>67</sup>1910 U. S. Census New Jersey, Middlesex Co. Ancestry.com, Provo, Utah. NARA, T624, New Brunswick Ward 2, ED 015, page 1 A.
- <sup>68</sup>1920 U.S. Census New York, Kings Co. Ancestry.com, Provo, Utah. NARA, T625, Brooklyn, Assembly District 5, ED 294, page 1 A.
- <sup>69</sup>1930 U.S. Census Florida, Pinellas Co. Ancestry.com, Provo, Utah. NARA, T626, St. Petersburg, ED 009, page 3 B.



- 
- <sup>70</sup>1940 U.S. Census New York, Westchester Co. Ancestry.com, Provo, Utah. NARA, T627, Eastchester, ED 60-38A, page 3 B.
- <sup>71</sup>*New York Times*, 5 April 1888.
- <sup>72</sup>Find A Grave, online [www.findagrave.com](http://www.findagrave.com), Memorial Number 11075204.
- <sup>73</sup>1870 U.S. Census New Jersey, Union Co. Ancestry.com, Provo, Utah. NARA, M593, Westfield, page 828 A.
- <sup>74</sup>1880 U.S. Census New Jersey, Union Co. Ancestry.com, Provo, Utah. NARA, T9, Westfield, ED 190, page 576 C.
- <sup>75</sup>*Courier-News*, Bridgewater, New Jersey. 17 October 1902
- <sup>76</sup>New York, NY Index to Death Certificates 1862-1948. Ancestry.com, Provo, Utah. Certificate Number 24188.
- <sup>77</sup>1880 U.S. Census New Jersey, Middlesex Co. Ancestry.com, Provo, Utah. NARA, T9, Westfield, ED 190, page 576 C.
- <sup>78</sup>1900 U.S. Census New Jersey, Middlesex Co. Ancestry.com, Provo, Utah. NARA, T623, New Brunswick Ward 4, ED 042, page 16.
- <sup>79</sup>1910 U. S. Census New Jersey, Middlesex Co. Ancestry.com, Provo, Utah. NARA, T624, New Brunswick Ward 2, ED 015, page 1 A.
- <sup>80</sup>1920 U. S. Census New Jersey, Middlesex Co. Ancestry.com, Provo, Utah. NARA, T625, New Brunswick Ward 4, ED 022, page 4 B.
- <sup>81</sup>1930 U.S. Census Florida, Pinellas Co, Ancestry.com, Provo, Utah. NARA, T626, St. Petersburg, ED 069, page 3 B.
- <sup>82</sup>*New York Arriving Passenger and Crew Lists 1920-1957*. Ancestry.com Index, Provo, Utah. 10 September 1927. <https://www.ancestry.com/imageviewer/collections/7488>.
- <sup>83</sup>New York Index to Birth Certificates 1866-1909 New York. Ancestry.com Index, Provo, Utah. Certificate Number 17051.
- <sup>84</sup>*New Jersey Marriage Records 1670-1965*. Ancestry.com Index, Provo, Utah. LDS Microfilm Number 004210069.
- <sup>85</sup>*Brooklyn Daily Eagle*, Brooklyn, Kings Co, New York, 1841-1955, 1960-1963. 3 April 1948, page 5.
- <sup>86</sup>Find A Grave, online [www.findagrave.com](http://www.findagrave.com), Memorial Number 57677887.
- <sup>87</sup>1870 U.S. Census New Jersey, Union Co. Ancestry.com, Provo, Utah. NARA, T593, Westfield, page 828 A.
- <sup>88</sup>1880 U.S. Census New Jersey, Union Co. Ancestry.com, Provo, Utah. NARA, T9, Westfield, ED 190, page 576 C.
- <sup>89</sup>1900 U.S. Census New York, Kings Co. Ancestry.com, Provo, Utah. NARA, T623, Brooklyn Ward 23, ED 405, page 16.
- <sup>90</sup>1910 U.S. Census New York, Kings Co. Ancestry.com, Provo, Utah. NARA, T624, Brooklyn Ward 23, ED 594, page 10 B.
- <sup>91</sup>1920 U.S. Census New York, Kings Co. Ancestry.com, Provo, Utah. NARA, T625, Brooklyn Assembly District 17, ED 1028, page 1 A.
- <sup>92</sup>1940 U.S. Census New York, Westchester Co. Ancestry.com, Provo, Utah. NARA, T627, Eastchester, ED 60-38A, page 3 B.
- <sup>93</sup>*New-York Evening Post*. New York, New York. 1832-1920. 30 June 1873.
- <sup>94</sup>1870 U.S. Census New Jersey, Union Co. Ancestry.com, Provo, Utah. NARA, M593, Westfield, page 828 A.
- <sup>95</sup>1880 U.S. Census New Jersey, Union Co. Ancestry.com, Provo, Utah. NARA, T9, Westfield, ED 190, page 576 C.